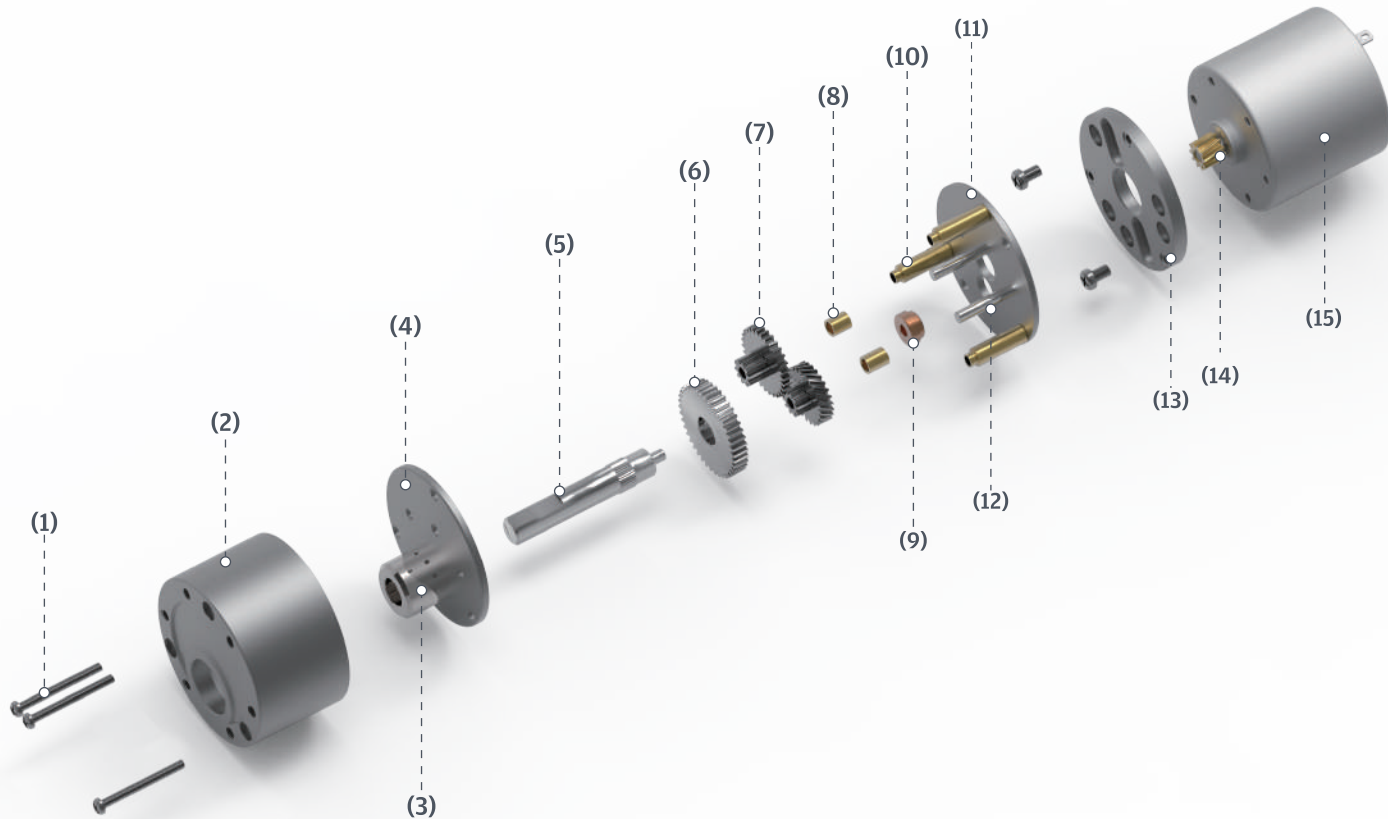


- PG
- IG
- Right Angle
- RA
- RB**
- WG
- SD
- BLDC
- Encoder
- Driver

正齒齒輪箱 (偏心出軸)

RB series (Eccentric Output Shaft)

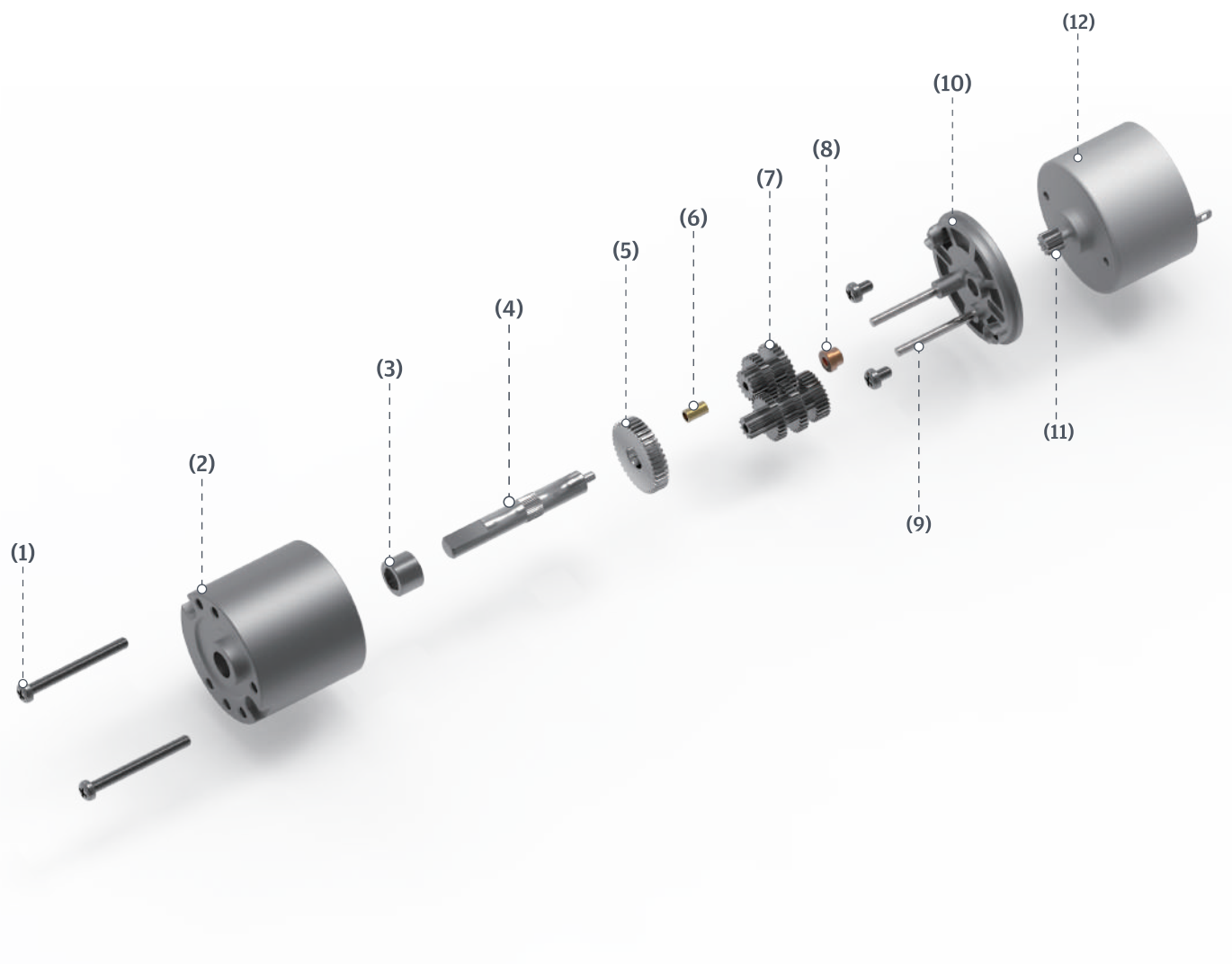


1	螺絲	Screw
2	外殼	Housing
3	軸承	Bearing
4	上機板	Front plate
5	主軸	Output shaft
6	傳動齒輪	Output gear
7	塔輪	Gear wheel
8	間隔套	Spacer sleeve

9	襯套	Bushing
10	支撐套	Support
11	下機板	End plate
12	梢	Pin
13	下蓋	Motor flange
14	馬達齒	Pinion
15	馬達	Motor

正齒齒輪箱 (偏心出軸)

RB series (Eccentric Output Shaft)

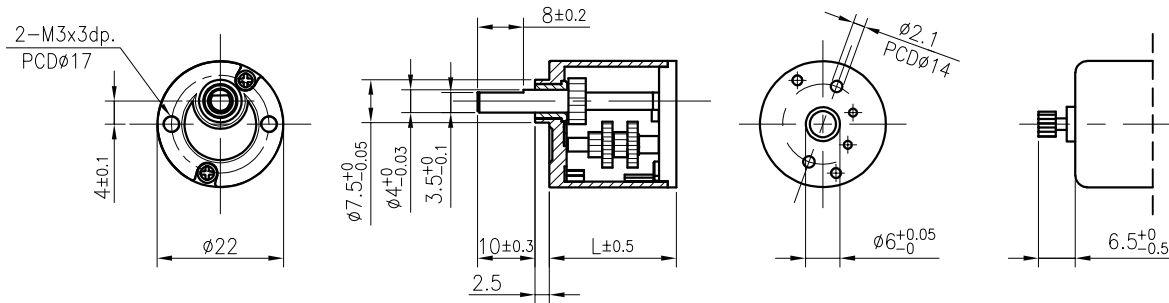


1	螺絲	Screw	7	塔輪	Gear wheel
2	外殼	Housing	8	襯套	Bushing
3	軸承	Bearing	9	梢	Pin
4	主軸	Output shaft	10	下蓋	Motor flange
5	傳動齒輪	Output gear	11	馬達齒	Pinion
6	間隔套	Spacer sleeve	12	馬達	Motor

RB-22



外形尺寸 & 馬達齒鉚合尺寸 / Appearance Size & Pinion Assembly Dimension



unit:mm

產品規格 / Product Specifications

外殼材質 Housing material	輸出軸承型式 Output shaft bearing	徑向負荷 Radial load (5mm from flange)	軸向負荷 Shaft axial load	主軸承受壓入力 Shaft press fit force	徑向間隙 Radial play of shaft	軸向間隙 Thrust play of shaft	背隙 (無負荷時) Backlash, at no-load
金屬 Metal	含油軸承 Sleeve bearing	≤ 0.4 kgf	≤ 0.2 kgf	≤ 2 kgf	≤ 0.05 mm	≤ 0.3 mm	$\leq 15^\circ$

馬達齒輪型式 / Pinion Specifications

模數 Module	齒數 No. of teeth	壓力角 Pressure angle	孔徑 (mm) Hole diameter	減速比 Reduction ratio
0.3	12	20°	$\phi 1.98$	全種通用 Practicable

標準減速比型式 / Gearboxes Specifications

減速比 Reduction ratio	1/9	1/19	1/24	1/39	1/51	1/82	1/106	1/112	1/137	1/145
定格容許扭力 (kgf-cm max.) Rated tolerance torque	0.4	0.6	0.6	1	1	1.2	1.2	1.2	1.5	1.5
瞬間容許扭力 (kgf-cm) Max momentary tolerance torque	1.2	1.8	1.8	3	3	3.6	3.6	3.6	4.5	4.5
效率 Efficiency	73%	66%	66%	59%	59%	53%	53%	53%	53%	53%
長度 Length (L)	17.7	17.7	17.7	22.1	22.1	22.1	22.1	22.1	22.1	22.1
重量 Weight (g)	23.9	24.5	24.5	26.3	26.3	27	27	27	27	27

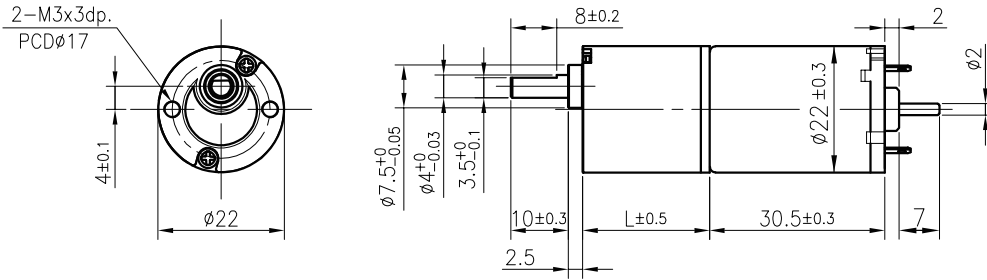
- 使用相對溼度：20%~85%RH
Operating relative humidity
- 使用溫度範圍：-10°C~+60°C
Operating temperature range

RB-22GM

03 & 04 TYPE



外形尺寸/ Appearance Size



unit:mm

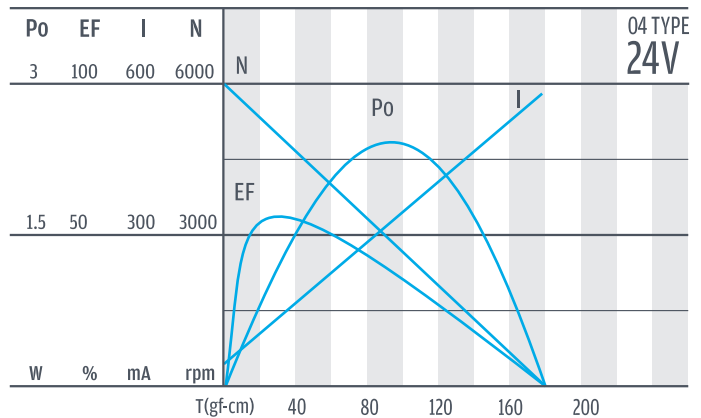
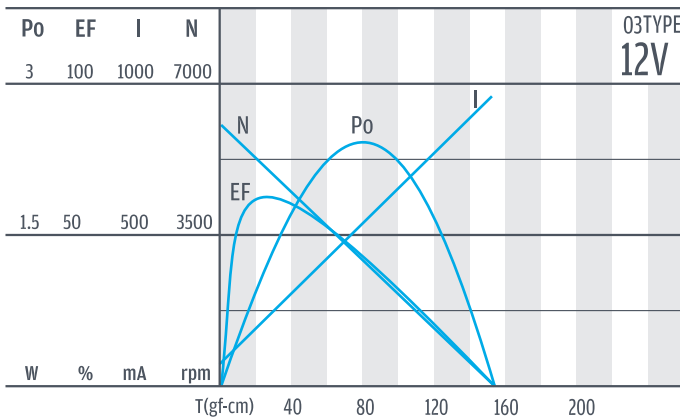
齒輪箱馬達轉矩 & 速度/ Gear Motor Torque & Speed

	減速比 Reduction ratio	1/9	1/19	1/24	1/39	1/51	1/82	1/106	1/112	1/137	1/145								
12V	定格扭力 Rated torque (gf-cm)	200	385	495	715	930	1200	1200	1200	1500	1500								
	定格轉速 Rated speed (rpm)	530	255	195	122	94	58	44	42	34	32								
24V	定格扭力 Rated torque (gf-cm)	240	460	595	855	1100	1200	1200	1200	1500	1500								
	定格轉速 Rated speed (rpm)	520	250	190	120	92	57	43	41	33	31								
	軸心迴轉方向 Rotation direction	ccw	cw		ccw		cw												
	長度 Length (L)	17.7			22.1														

馬達單體型式/ Motor Data

定格電壓 Rated volt (V)	定格扭力 Rated torque (gf-cm)	定格轉速 Rated speed (rpm)	定格電流 Rated current (mA)	無負荷轉速 No load speed (rpm)	無負荷電流 No load current (mA)	定格出力 Rated output (W)	重量 Weight (g)
12	31	4790	≤ 240	6000	≤ 80	1.52	43
24	37	4710	≤ 145	6000	≤ 55	1.79	43

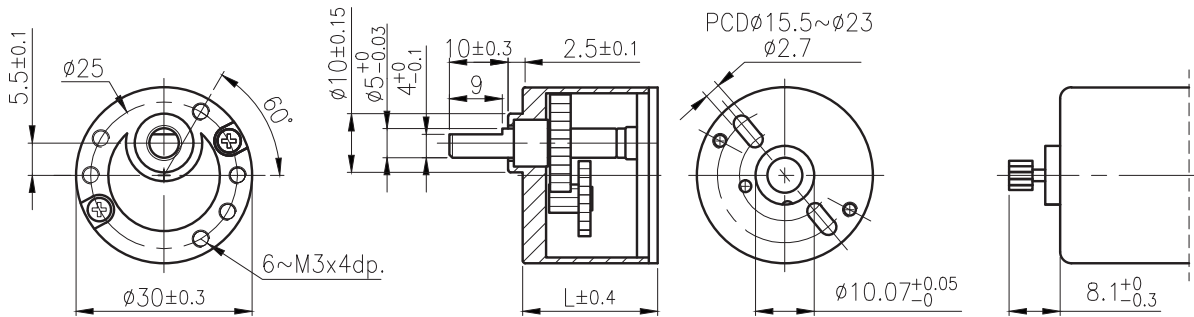
馬達單體特性/ Motor Characteristics



RB-30



外形尺寸 & 馬達齒鉋合尺寸 / Appearance Size & Pinion Assembly Dimension



unit:mm

產品規格 / Product Specifications

外殼材質 Housing material	輸出軸承型式 Output shaft bearing	徑向負荷 Radial load (10mm from flange)	軸向負荷 Shaft axial load	主軸承受壓入力 Shaft press fit force	徑向間隙 Radial play of shaft	軸向間隙 Thrust play of shaft	背隙 (無負荷時) Backlash, at no-load
金屬 Metal	含油軸承 Sleeve bearing	≤ 0.8 kgf	≤ 0.6 kgf	≤ 10 kgf	≤ 0.05 mm	≤ 0.35 mm	$\leq 2^\circ$

馬達齒輪型式 / Pinion Specifications

模數 Module	齒數 No. of teeth	壓力角 Pressure angle	孔徑 (mm) Hole diameter	減速比 Reduction ratio
0.4	10	20°	$\phi 1.98, \phi 2.28$	全種通用 Practicable

標準減速比型式 / Gearboxes Specifications

減速比 Reduction ratio	1/20	1/30	1/36	1/50	1/60	1/75	1/90	1/100	1/120	1/150	1/180	1/200	1/250	1/300	1/400	1/500	1/600	1/810	1/900	1/1000
定格容許扭力 (kgf-cm max.) Rated tolerance torque	1	1.5	1.5	2	2	3	3	3	4	4	4.5	4.5	4.5	4.5	4.5	4.5	4.5	4.5	4.5	4.5
瞬間容許扭力 (kgf-cm) Max momentary tolerance torque	3	4.5	4.5	6	6	9	9	9	12	12	13.5	13.5	13.5	13.5	13.5	13.5	13.5	13.5	13.5	13.5
效率 Efficiency	66%	66%	66%	66%	66%	66%	66%	66%	53%	53%	53%	53%	53%	53%	53%	53%	53%	53%	53%	53%
長度 Length (L)	23	23	23	23	23	23	23	23	28	28	28	28	28	28	28	28	28	28	28	28
重量 Weight (g)	89	89	89	89	89	89	89	89	98	98	98	98	98	98	98	98	98	98	98	98

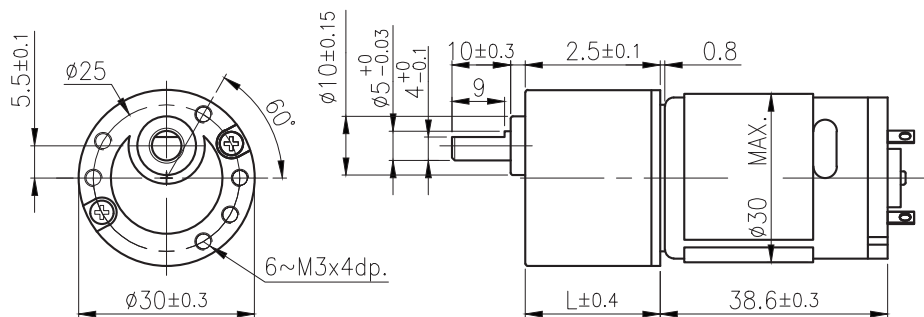
- 使用相對溼度：20%~85%RH
Operating relative humidity
- 使用溫度範圍：-10°C~+60°C
Operating temperature range

RB-30GM

02 & 03 TYPE



外形尺寸/ Appearance Size



unit:mm

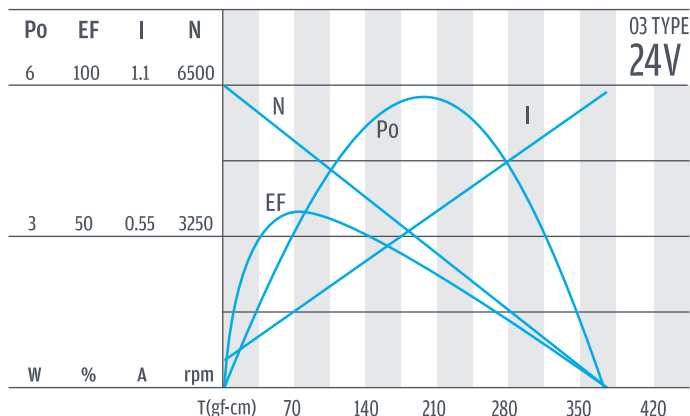
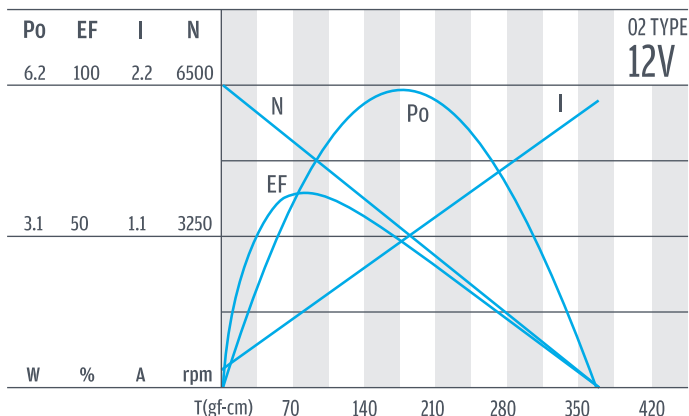
齒輪箱馬達轉矩 & 速度/ Gear Motor Torque & Speed

減速比 Reduction ratio		1/20	1/30	1/36	1/50	1/60	1/75	1/90	1/100	1/120	1/150	1/180	1/200	1/250	1/300	1/400	1/500	1/600	1/810	1/900	1/1000
12V	定格扭力 Rated torque (kgf-cm)	1	1.5	1.5	2	2	3	3	3	4	4	4.5	4.5	4.5	4.5	4.5	4.5	4.5	4.5	4.5	4.5
	定格轉速 Rated speed (rpm)	255	168	150	107	91	73	62	56	46.3	37.5	32	28.8	24	19.5	15.2	12.1	10.4	7.7	6.9	6.3
24V	定格扭力 Rated torque (kgf-cm)	1	1.5	1.5	2	2	3	3	3	4	4	4.5	4.5	4.5	4.5	4.5	4.5	4.5	4.5	4.5	4.5
	定格轉速 Rated speed (rpm)	258	168	150	107	91	73	62	56	46.3	37.4	31.8	28.7	24	19.5	15.1	12.1	10.3	7.7	6.9	6.3
軸心迴轉方向 Rotation direction		CCW																			
長度 Length (L)		23										28									

馬達單體型式/ Motor Data

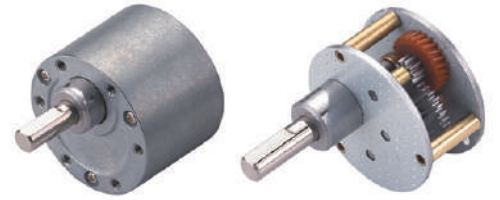
定格電壓 Rated volt (V)	定格扭力 Rated torque (gf-cm)	定格轉速 Rated speed (rpm)	定格電流 Rated current (A)	無負荷轉速 No load speed (rpm)	無負荷電流 No load current (A)	定格出力 Rated output (W)	重量 Weight (g)
12	78	5290	≤ 0.53	6500	≤ 0.15	4.22	73
24	74	5250	≤ 0.25	6500	≤ 0.1	3.97	73

馬達單體特性/ Motor Characteristics



PG

RB-35C

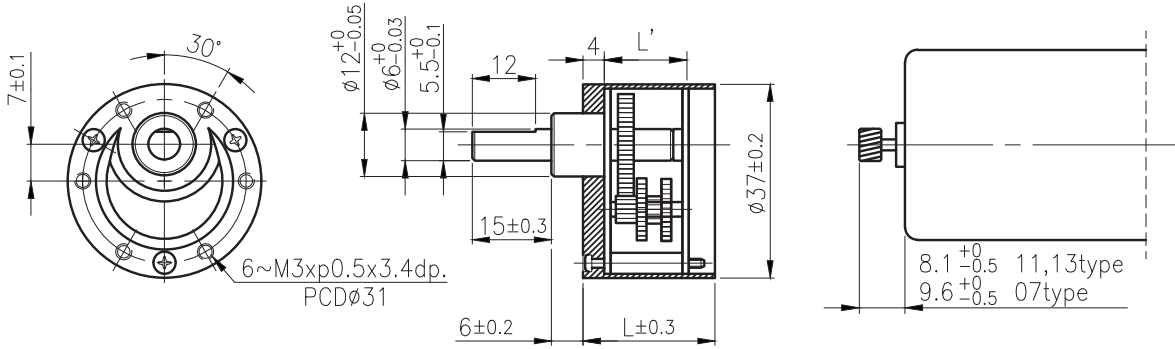


IG

外形尺寸 & 馬達齒鉤合尺寸 / Appearance Size & Pinion Assembly Dimension

Right Angle

RA



unit:mm

RB

產品規格/ Product Specifications

外殼材質 Housing material	輸出軸承型式 Output shaft bearing	徑向負荷 Radial load (10mm from flange)	軸向負荷 Shaft axial load	主軸承受壓入力 Shaft press fit force	徑向間隙 Radial play of shaft	軸向間隙 Thrust play of shaft	背隙 (無負荷時) Backlash, at no-load
金屬 Metal	含油軸承 Sleeve bearing	≤ 1 kgf	≤ 0.7 kgf	≤ 20 kgf	≤ 0.05 mm	≤ 0.35 mm	≤ 2°

WG

馬達齒輪型式/ Pinion Specifications

模數 Module	齒數 No. of teeth	壓力角 Pressure angle	螺旋角 Helix angle	孔徑 (mm) Hole diameter	減速比 Reduction ratio
0.5	10	20°	— 18° (左, left)	∅ 1.98, ∅ 2.28, ∅ 2.48, ∅ 2.98, ∅ 3.16	全種通用 Practicable

SD

標準減速比型式/ Gearboxes Specifications

減速比 Reduction ratio	1/6	1/10	1/18	1/30	1/50	1/60	1/70	1/75	1/90	1/100	1/120	1/150	1/180	1/200	1/250	1/300	1/350	1/400	1/450	1/500	1/600	1/700	1/750	1/900	1/1000	1/1500	1/3000	
定格容許扭力(kgf-cm max.) Rated tolerance torque	1	1	1	2	3	3	3	4	4	6	6	6	6	6	6	6	6	6	6	6	6	6	6	6	6	6	6	6
瞬間容許扭力(kgf-cm) Max momentary tolerance torque	3	3	3	6	9	9	9	12	12	18	18	18	18	18	18	18	18	18	18	18	18	18	18	18	18	18	18	18
效率 Efficiency	81%	81%	73%	73%	66%	66%	66%	66%	66%	66%	59%	59%	59%	59%	59%	59%	53%	53%	53%	53%	53%	53%	53%	53%	53%	53%	48%	48%
長度 Length (L)	12.5	12.5	15	15	17.5	17.5	17.5	17.5	17.5	17.5	20	20	20	20	20	20	22.5	22.5	22.5	22.5	22.5	22.5	22.5	22.5	22.5	22.5	25	25
長度 Length (L)	19.5	19.5	22	22	24.5	24.5	24.5	24.5	24.5	24.5	27	27	27	27	27	27	29.5	29.5	29.5	29.5	29.5	29.5	29.5	29.5	29.5	29.5	32	32
重量 Weight (g)	86	86	93	93	100	100	100	100	100	100	106	106	106	106	106	106	112	112	112	112	112	112	112	112	112	112	120	120

BLDC

Encoder

Driver

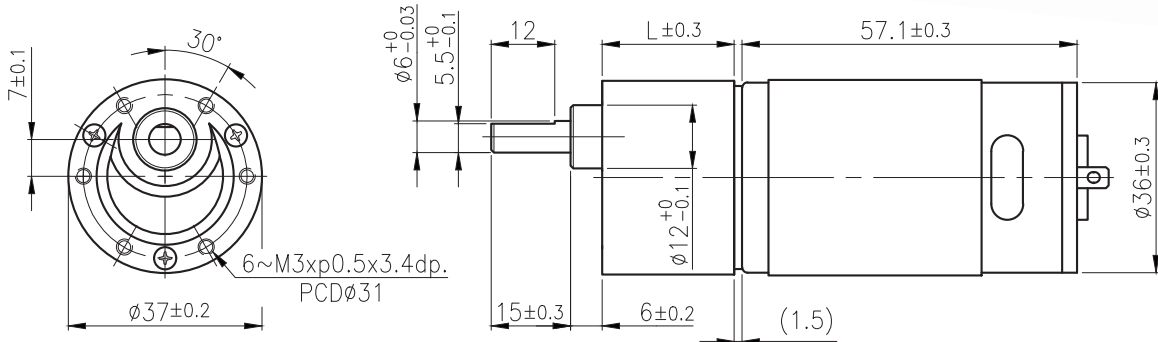
- 使用相對溼度：20%~85%RH
Operating relative humidity
- 使用溫度範圍：-10°C~+60°C
Operating temperature range

RB-37GM

07 & 09 TYPE



外形尺寸/ Appearance Size



unit:mm

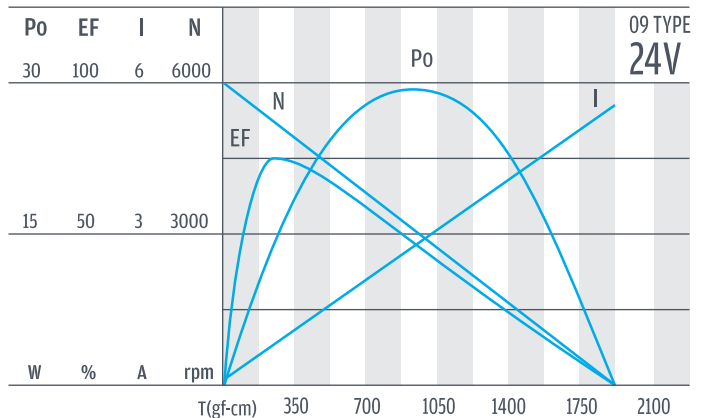
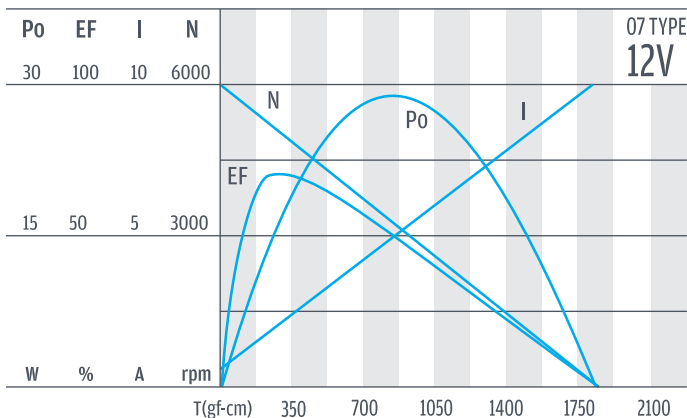
齒輪箱馬達轉矩 & 速度/ Gear Motor Torque & Speed

	減速比 Reduction ratio	1/10	1/18	1/30	1/50	1/60	1/75	1/90	1/100	1/120	1/150	1/180	1/200	1/250	1/300	1/500	1/600	1/750	1/1000	1/1500	1/3000
12V	定格扭力 Rated torque (kgf-cm)	1	1	2	3	3	4	4	6	6	6	6	6	6	6	6	6	6	6	6	6
	定格轉速 Rated speed (rpm)	528	313	185	109	95	76	63	55	47	36	31.5	29	22.5	19.5	11.5	9.8	8	5.9	3.9	2
24V	定格扭力 Rated torque (kgf-cm)	1	1	2	3	3	4	4	6	6	6	6	6	6	6	6	6	6	6	6	6
	定格轉速 Rated speed (rpm)	532	315	186	111	96	77	64	55.5	48	36	32	29.5	23	20	11.8	9.9	8	6	4	2
	軸心迴轉方向 Rotation direction	CCW	CW				CCW					CW					CCW				CW
	長度 Length (L)	19.5	22				24.5					27					29.5				32

馬達單體型式/ Motor Data

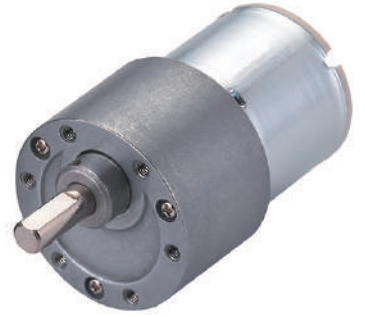
定格電壓 Rated volt (V)	定格扭力 Rated torque (gf-cm)	定格轉速 Rated speed (rpm)	定格電流 Rated current (A)	無負荷轉速 No load speed (rpm)	無負荷電流 No load current (A)	定格出力 Rated output (W)	重量 Weight (g)
12	250	4930	≤ 1.6	6000	≤ 0.25	12.80	220
24	240	5150	≤ 0.75	6000	≤ 0.13	12.70	220

馬達單體特性/ Motor Characteristics

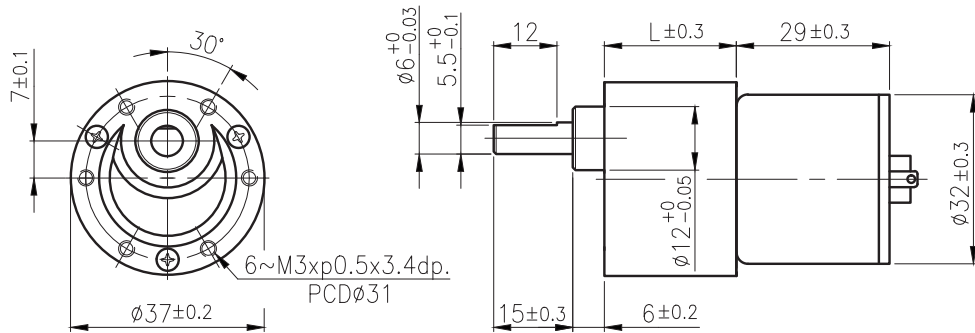


RB-37GM

11 & 12 TYPE



外形尺寸 / Appearance Size



unit:mm

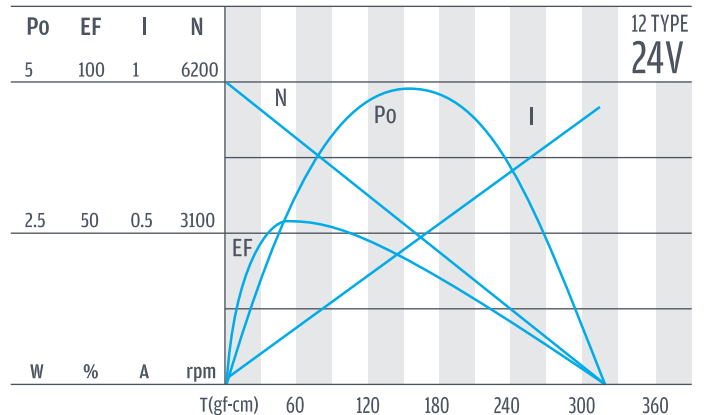
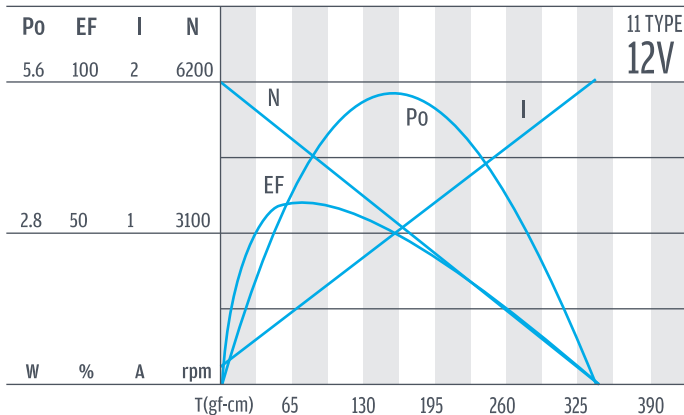
齒輪箱馬達轉矩 & 速度 / Gear Motor Torque & Speed

減速比 Reduction ratio	1/10	1/18	1/30	1/50	1/60	1/75	1/90	1/100	1/120	1/150	1/180	1/200	1/250	1/300	1/500	1/600	1/750	1/1000	1/1500	1/3000	
12V																					
定額扭力 Rated torque (kgf-cm)	0.5	0.8	1.3	2	2.4	2.9	3.5	3.9	4.2	5.3	6	6	6	6	6	6	6	6	6	6	
定額轉速 Rated speed (rpm)	490	270	168	100	84	67	57	51	42.5	34	29	26	22	19	11.2	9.5	8	6	4.1	2	
24V																					
定額扭力 Rated torque (kgf-cm)	0.5	0.8	1.4	2	2.4	3	3.6	4	4.4	5.4	6	6	6	6	6	6	6	6	6	6	
定額轉速 Rated speed (rpm)	480	250	160	98	83	65	56	50	41.5	33	28.5	26	22	19	11	9.3	7.9	5.9	4	2	
軸心迴轉方向 Rotation direction	CW		CCW		CW				CCW				CW				CCW				
長度 Length (L)	19.5		22		24.5				27				29.5				32				

馬達單體型式 / Motor Data

定額電壓 Rated volt (V)	定額扭力 Rated torque (gf-cm)	定額轉速 Rated speed (rpm)	定額電流 Rated current (A)	無負荷轉速 No load speed (rpm)	無負荷電流 No load current (A)	定額出力 Rated output (W)	重量 Weight (g)
12	60	5100	≤ 0.47	6200	≤ 0.12	3.14	75
24	62	5000	≤ 0.21	6200	≤ 0.06	3.17	75

馬達單體特性 / Motor Characteristics

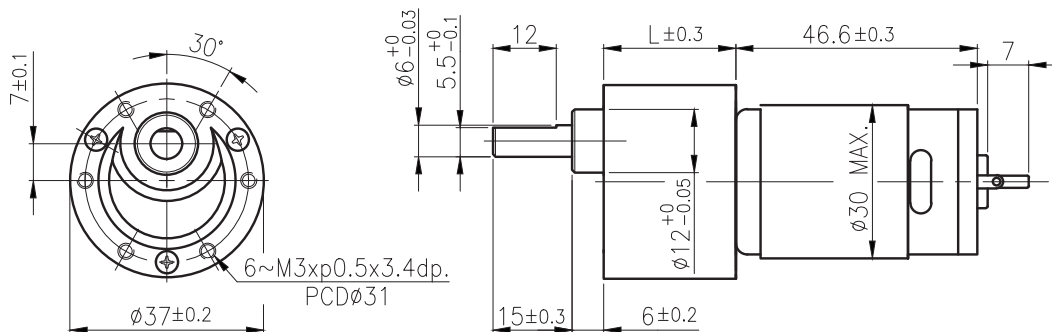


RB-37GM

13 & 14 TYPE



外形尺寸/ Appearance Size



unit:mm

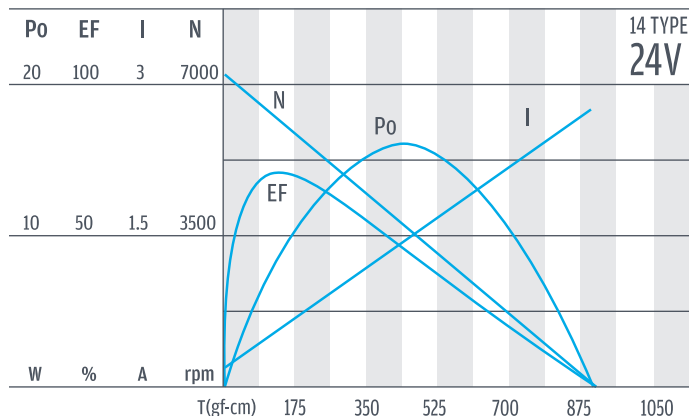
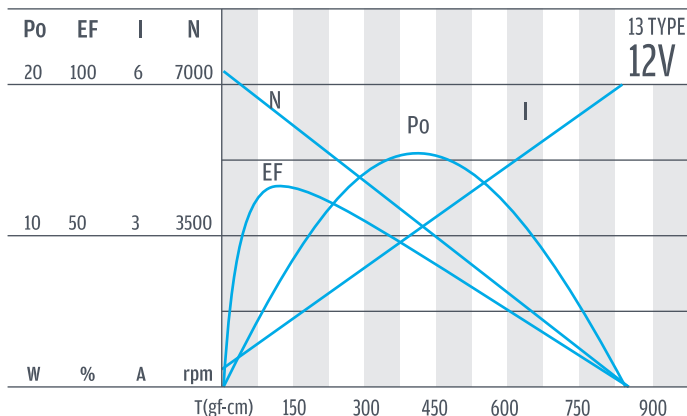
齒輪箱馬達轉矩 & 速度/ Gear Motor Torque & Speed

	減速比 Reduction ratio	1/10	1/18	1/30	1/50	1/60	1/75	1/90	1/100	1/120	1/150	1/180	1/200	1/250	1/300	1/500	1/600	1/750	1/1000	1/1500	1/3000
12V	定格扭力 Rated torque (kgf-cm)	0.89	1	2	3	3	4	4	6	6	6	6	6	6	6	6	6	6	6	6	6
	定格轉速 Rated speed (rpm)	595	336	200	122	101	82	69	60	50	41	35	31	25	21	12.6	10.5	8.4	6.4	4.3	2.2
24V	定格扭力 Rated torque (kgf-cm)	1	1	2	3	3	4	4	6	6	6	6	6	6	6	6	6	6	6	6	6
	定格轉速 Rated speed (rpm)	616	350	208	126	106	85	71	62	51	42	36	32	26	22	12.7	10.6	8.5	6.4	4.3	2.2
	軸心迴轉方向 Rotation direction	CCW	CW					CCW					CW					CCW			CW
	長度 Length (L)	19.5	22					24.5					27					29.5			32

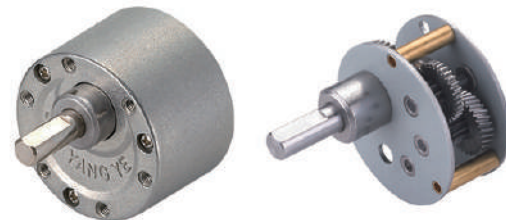
馬達單體型式/ Motor Data

定格電壓 Rated volt (V)	定格扭力 Rated torque (gf-cm)	定格轉速 Rated speed (rpm)	定格電流 Rated current (A)	無負荷轉速 No load speed (rpm)	無負荷電流 No load current (A)	定格出力 Rated output (W)	重量 Weight (g)
12	110	5950	≤0.9	7200	≤0.15	7.0	110
24	130	6160	≤0.5	7200	≤0.12	8.5	110

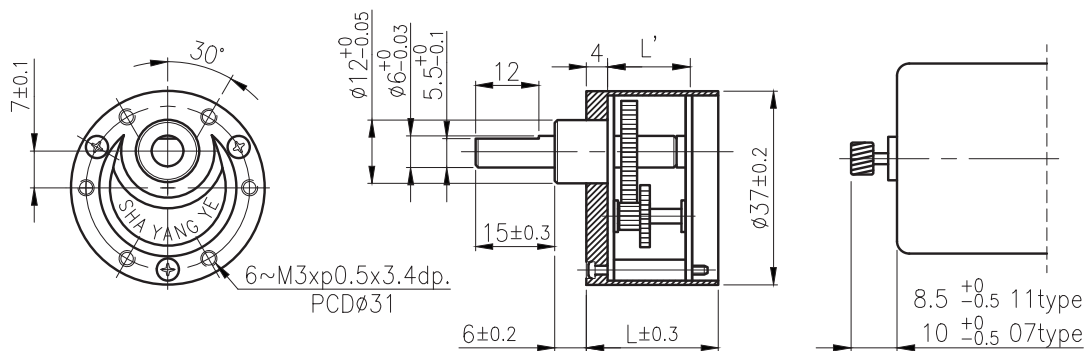
馬達單體特性/ Motor Characteristics



RB-35A



外形尺寸 & 馬達齒鉤合尺寸 / Appearance Size & Pinion Assembly Dimension



unit:mm

產品規格 / Product Specifications

外殼材質 Housing material	輸出軸承型式 Output shaft bearing	徑向負荷 Radial load (10mm from flange)	軸向負荷 Shaft axial load	主軸承受壓入力 Shaft press fit force	徑向間隙 Radial play of shaft	軸向間隙 Thrust play of shaft	背隙 (無負荷時) Backlash, at no-load
金屬 Metal	含油軸承 Sleeve bearing	≤ 1 kgf	≤ 0.7 kgf	≤ 20 kgf	≤ 0.05 mm	≤ 0.35 mm	≤ 2°

馬達齒輪型式 / Pinion Specifications

模數 Module	齒數 No. of teeth	壓力角 Pressure angle	螺旋角 Helix angle	孔徑 (mm) Hole diameter	減速比 Reduction ratio
0.4	12	20°	— 18° (左, left)	∅ 1.98, ∅ 2.28, ∅ 2.48, ∅ 3.16	全種通用 Practicable

標準減速比型式 / Gearboxes Specifications

減速比 Reduction ratio	1/6	1/10	1/18	1/25	1/30	1/36	1/50	1/60	1/75	1/120	1/150	1/180	1/250
定格容許扭力 (kgf-cm max.) Rated tolerance torque	1	1	1	2	2	3	3	3	4	6	6	6	6
瞬間容許扭力 (kgf-cm) Max momentary tolerance torque	3	3	3	6	6	9	9	9	12	18	18	18	18
效率 Efficiency	81%	81%	73%	73%	73%	66%	66%	66%	66%	59%	59%	59%	59%
長度 Length (L)	13.5	13.5	16	16	16	18.5	18.5	18.5	18.5	21	21	21	21
長度 Length (L)	19.5	19.5	22	22	22	24.5	24.5	24.5	24.5	27	27	27	27
重量 Weight (g)	91	91	98	98	98	105	105	105	105	111	111	111	111

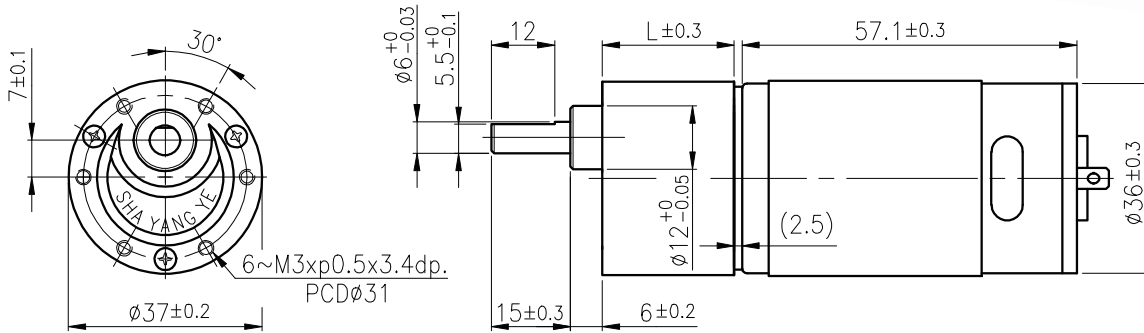
- 使用相對溼度：20%~85%RH
Operating relative humidity
- 使用溫度範圍：-10℃~+60℃
Operating temperature range

RB-37AGM

07 & 09 TYPE



外形尺寸 / Appearance Size



unit:mm

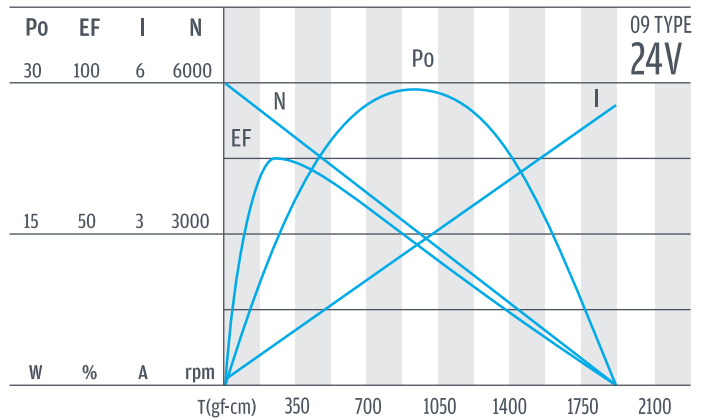
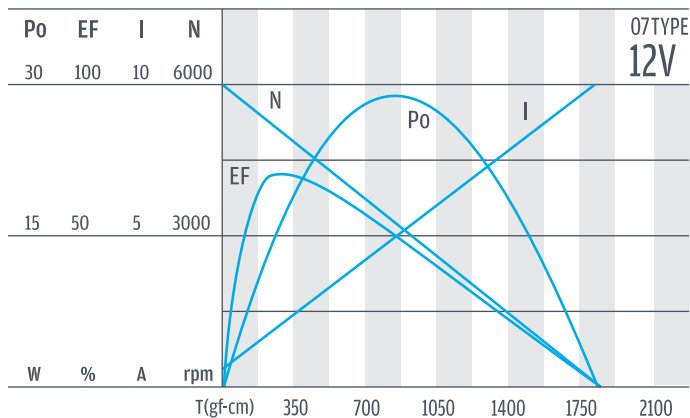
齒輪箱馬達轉矩 & 速度 / Gear Motor Torque & Speed

	減速比 Reduction ratio	1/6	1/10	1/18	1/25	1/30	1/50	1/60	1/75	1/100	1/120	1/150	1/180	1/250
12V	定格扭力 Rated torque (kgf-cm)	1	1	1	2	2	3	3	4	6	6	6	6	6
	定格轉速 Rated speed (rpm)	900	528	313	210	185	109	95	76	55	47	36	31.5	21
24V	定格扭力 Rated torque (kgf-cm)	1	1	1	2	2	3	3	4	6	6	6	6	6
	定格轉速 Rated speed (rpm)	910	532	315	220	186	111	96	77	55.5	48	36	32	22
	軸心迴轉方向 Rotation direction	CCW		CW			CCW			CW				
	長度 Length (L)	19.5		22			24.5			27				

馬達單體型式 / Motor Data

定格電壓 Rated volt (V)	定格扭力 Rated torque (gf-cm)	定格轉速 Rated speed (rpm)	定格電流 Rated current (A)	無負荷轉速 No load speed (rpm)	無負荷電流 No load current (A)	定格出力 Rated output (W)	重量 Weight (g)
12	250	4930	≤1.6	6000	≤0.25	12.80	220
24	240	5150	≤0.75	6000	≤0.13	12.70	220

馬達單體特性 / Motor Characteristics

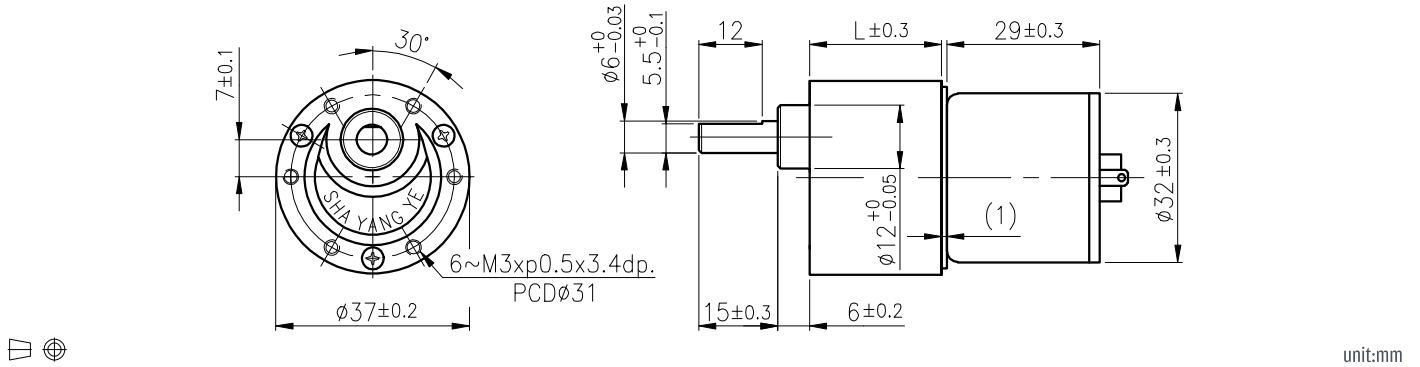


RB-37AGM

11 & 12 TYPE



外形尺寸 / Appearance Size



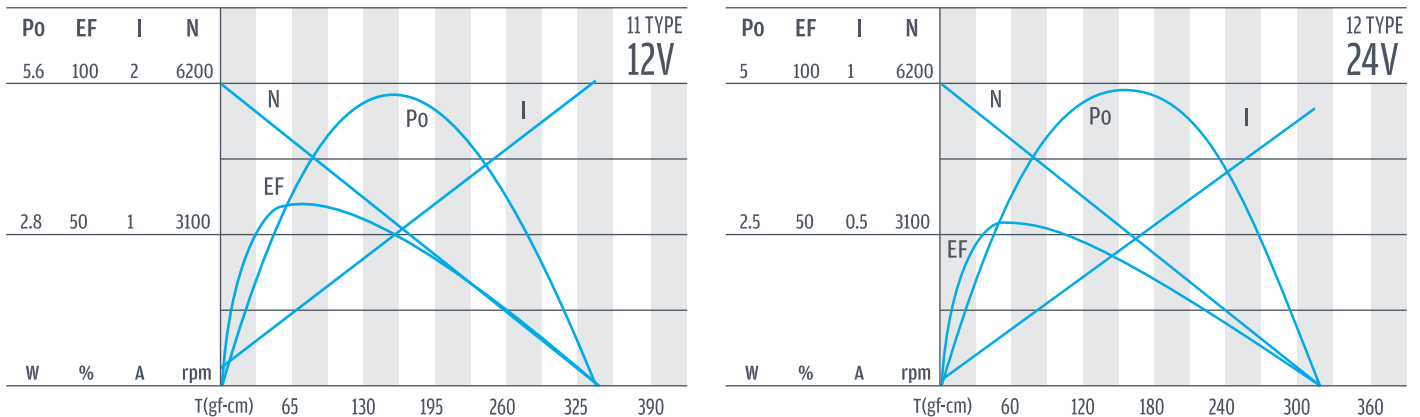
齒輪箱馬達轉矩 & 速度 / Gear Motor Torque & Speed

	減速比 Reduction ratio	1/6	1/10	1/18	1/25	1/30	1/50	1/60	1/75	1/100	1/120	1/150	1/180	1/250
12V	定格扭力 Rated torque (kgf-cm)	0.3	0.5	0.8	1	1.3	2	2.4	2.9	3.9	4.2	5.3	6	6
	定格轉速 Rated speed (rpm)	850	490	270	200	168	100	84	67	51	42.5	34	29	22
24V	定格扭力 Rated torque (kgf-cm)	0.3	0.5	0.8	1	1.4	2	2.4	3	4	4.4	5.4	6	6
	定格轉速 Rated speed (rpm)	833	480	250	200	160	98	83	65	50	41.5	33	28.5	22
	軸心迴轉方向 Rotation direction	CCW			CW			CCW			CW			
	長度 Length (L)	19.5			22			24.5			27			

馬達單體型式 / Motor Data

定格電壓 Rated volt (V)	定格扭力 Rated torque (gf-cm)	定格轉速 Rated speed (rpm)	定格電流 Rated current (A)	無負荷轉速 No load speed (rpm)	無負荷電流 No load current (A)	定格出力 Rated output (W)	重量 Weight (g)
12	60	5100	≤0.47	6200	≤0.12	3.14	75
24	62	5000	≤0.21	6200	≤0.06	3.17	75

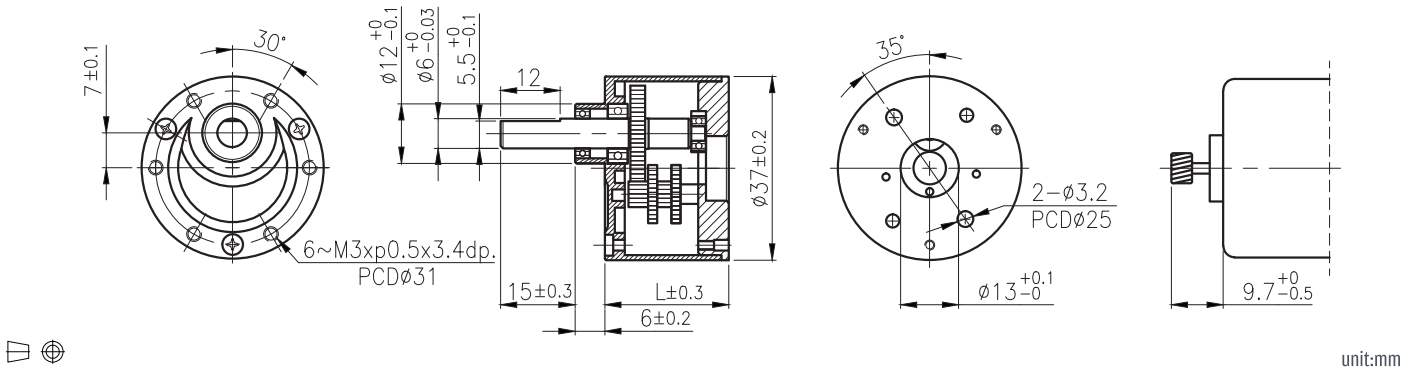
馬達單體特性 / Motor Characteristics



RB-37B



外形尺寸 & 馬達齒鉚合尺寸 / Appearance Size & Pinion Assembly Dimension



產品規格 / Product Specifications

外殼材質 Housing material	輸出軸承型式 Output shaft bearing	徑向負荷 Radial load (10mm from flange)	軸向負荷 Shaft axial load	主軸承受壓入力 Shaft press fit force	徑向間隙 Radial play of shaft	軸向間隙 Thrust play of shaft	背隙 (無負荷時) Backlash, at no-load
金屬 Metal	滾珠軸承 Ball bearings	≤ 2 kgf	≤ 0.7 kgf	≤ 20 kgf	≤ 0.04 mm	≤ 0.35 mm	≤ 2°

馬達齒輪型式 / Pinion Specifications

模數 Module	齒數 No. of teeth	壓力角 Pressure angle	螺旋角 Helix angle	孔徑 (mm) Hole diameter	減速比 Reduction ratio
0.5	10	20°	18° (左, left)	∅ 1.98, ∅ 2.28, ∅ 2.48, ∅ 2.98, ∅ 3.16	全種通用 Practicable

標準減速比型式 / Gearboxes Specifications

減速比 Reduction ratio	1/6	1/10	1/18	1/30	1/50	1/60	1/70	1/75	1/90	1/100	1/120	1/150	1/180	1/200	1/250	1/300	1/350	1/400	1/450	1/500	1/600	1/700	1/750	1/900	1/1000	1/1500	1/3000
定格容許扭力 (kgf-cm max.) Rated tolerance torque	1	1	1	2	3	3	3	4	4	6	6	6	6	6	6	6	6	6	6	6	6	6	6	6	6	6	6
瞬間容許扭力 (kgf-cm) Max momentary tolerance torque	3	3	3	6	9	9	9	12	12	18	18	18	18	18	18	18	18	18	18	18	18	18	18	18	18	18	18
效率 Efficiency	81%	81%	73%	73%	66%	66%	66%	66%	66%	66%	59%	59%	59%	59%	59%	59%	53%	53%	53%	53%	53%	53%	53%	53%	53%	48%	48%
長度 Length (L)	19.5	19.5	22	22	24.5	24.5	24.5	24.5	24.5	24.5	27	27	27	27	27	27	29.5	29.5	29.5	29.5	29.5	29.5	29.5	29.5	29.5	32	32
重量 Weight (g)	64	64	70	70	76	76	76	76	76	76	82	82	82	82	82	82	88	88	88	88	88	88	88	88	88	96	96

- 使用相對溼度：20%~85%RH
Operating relative humidity
- 使用溫度範圍：-10°C~+60°C
Operating temperature range

PG

RB-37BGM

07 & 09 TYPE

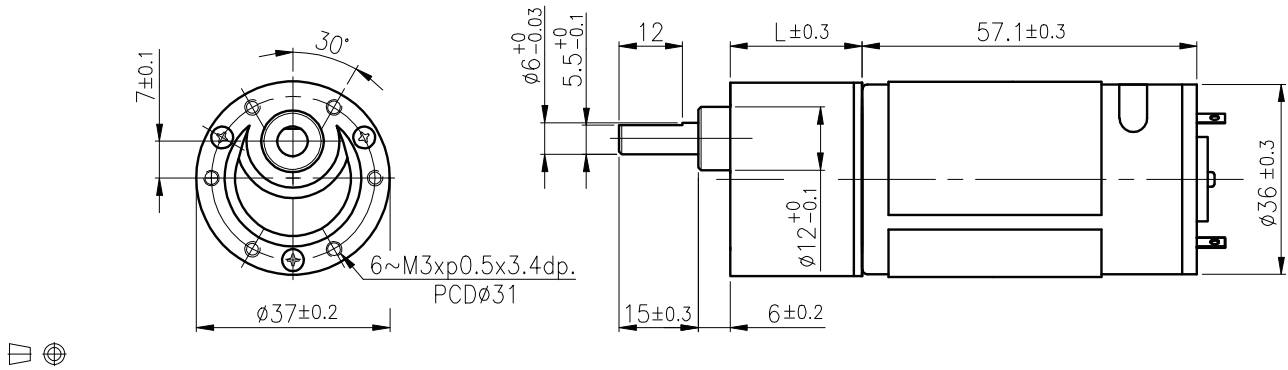


IG

外形尺寸 / Appearance Size

Right Angle

RA



unit:mm

RB

齒輪箱馬達轉矩 & 速度 / Gear Motor Torque & Speed

減速比 Reduction ratio	1/10	1/18	1/30	1/50	1/60	1/75	1/90	1/100	1/120	1/150	1/180	1/200	1/250	1/300	1/500	1/600	1/750	1/1000	1/1500	1/3000	
12V																					
定格扭力 Rated torque (kgf-cm)	1	1	2	3	3	4	4	6	6	6	6	6	6	6	6	6	6	6	6	6	6
定格轉速 Rated speed (rpm)	528	313	185	109	95	76	63	55	47	36	31.5	29	22.5	19.5	11.5	9.8	8	5.9	3.9	2	
24V																					
定格扭力 Rated torque (kgf-cm)	1	1	2	3	3	4	4	6	6	6	6	6	6	6	6	6	6	6	6	6	6
定格轉速 Rated speed (rpm)	532	315	186	111	96	77	64	55.5	48	36	32	29.5	23	20	11.8	9.9	8	6	4	2	
軸心迴轉方向 Rotation direction	CCW	CW					CCW					CW					CCW				CW
長度 Length (L)	19.5	22					24.5					27					29.5				32

WG

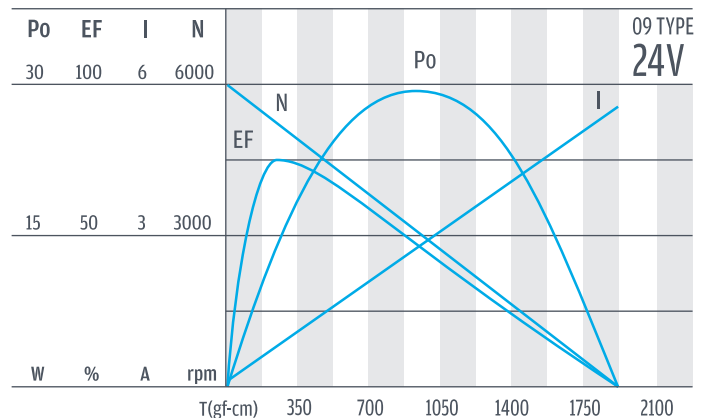
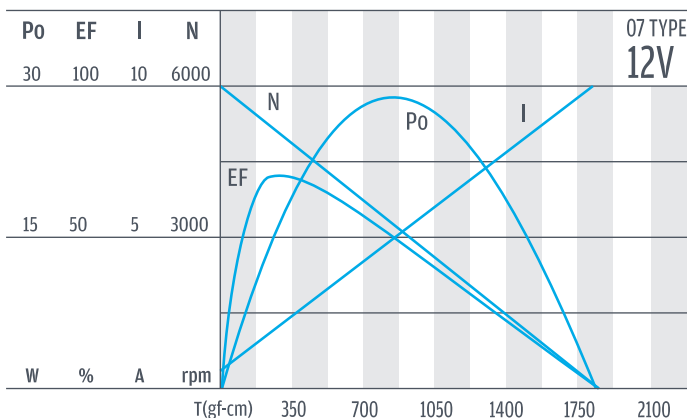
SD

馬達單體型式 / Motor Data

定格電壓 Rated volt (V)	定格扭力 Rated torque (gf-cm)	定格轉速 Rated speed (rpm)	定格電流 Rated current (A)	無負荷轉速 No load speed (rpm)	無負荷電流 No load current (A)	定格出力 Rated output (W)	重量 Weight (g)
12	250	4930	≤1.6	6000	≤0.25	12.80	220
24	240	5150	≤0.75	6000	≤0.13	12.70	220

BLDC

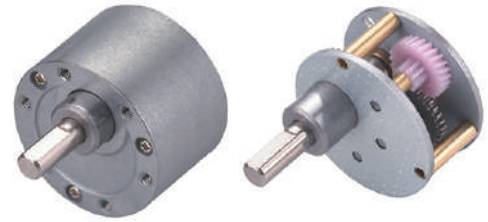
馬達單體特性 / Motor Characteristics



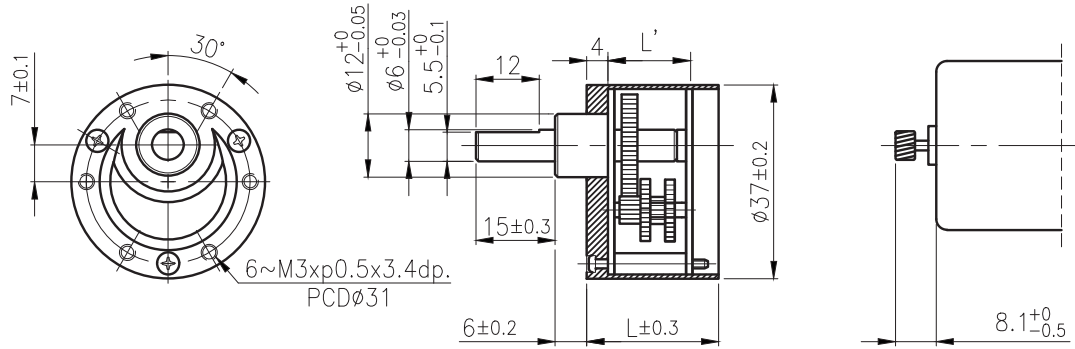
Encoder

Driver

RB-35P



外形尺寸 & 馬達齒鉤合尺寸 / Appearance Size & Pinion Assembly Dimension



unit:mm

產品規格 / Product Specifications

外殼材質 Housing material	輸出軸承型式 Output shaft bearing	徑向負荷 Radial load (10mm from flange)	軸向負荷 Shaft axial load	主軸承受壓入力 Shaft press fit force	徑向間隙 Radial play of shaft	軸向間隙 Thrust play of shaft	背隙 (無負荷時) Backlash, at no-load
金屬 Metal	含油軸承 Sleeve bearing	≤ 1 kgf	≤ 0.7 kgf	≤ 20 kgf	≤ 0.05 mm	≤ 0.35 mm	$\leq 2^\circ$

馬達齒輪型式 / Pinion Specifications

模數 Module	齒數 No. of teeth	壓力角 Pressure angle	螺旋角 Helix angle	孔徑 (mm) Hole diameter	減速比 Reduction ratio
0.5	10	20°	18° (左, left)	$\phi 1.98, \phi 2.28, \phi 2.48, \phi 2.98, \phi 3.16$	全種通用 Practicable

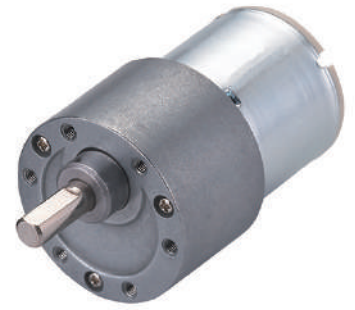
標準減速比型式 / Gearboxes Specifications

減速比 Reduction ratio	1/18	1/30	1/50	1/60	1/75	1/90	1/100	1/120	1/150	1/180	1/200	1/300	1/400	1/450	1/500	1/600	1/900	1/1000	1/1500	1/3000
定格容許扭力 (kgf-cm max.) Rated tolerance torque	1	1.2	2	2	2	3	3	4	4	4	4	4	4	4	4	4	4	4	4	4
瞬間容許扭力 (kgf-cm) Max momentary tolerance torque	3	3.6	6	6	6	9	9	12	12	12	12	12	12	12	12	12	12	12	12	12
效率 Efficiency	73%	73%	66%	66%	66%	66%	66%	59%	59%	59%	59%	59%	53%	53%	53%	53%	53%	53%	48%	48%
長度 Length (L)	15	15	17.5	17.5	17.5	17.5	17.5	20	20	20	20	20	22.5	22.5	22.5	22.5	22.5	22.5	25	25
長度 Length (L)	22	22	24.5	24.5	24.5	24.5	24.5	27	27	27	27	27	29.5	29.5	29.5	29.5	29.5	29.5	32	32
重量 Weight (g)	91	91	98	98	98	98	98	104	104	104	104	104	110	110	110	110	110	110	118	118

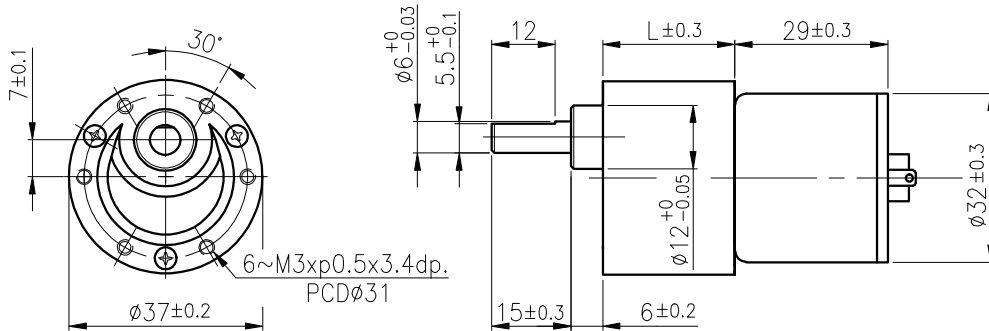
- 使用相對溼度：20%~85%RH
Operating relative humidity
- 使用溫度範圍：-10°C~+60°C
Operating temperature range

RB-37PGM

11 & 12 TYPE



外形尺寸 / Appearance Size



unit:mm

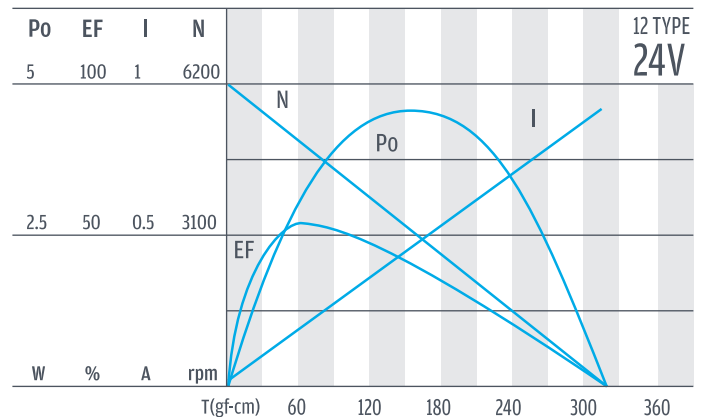
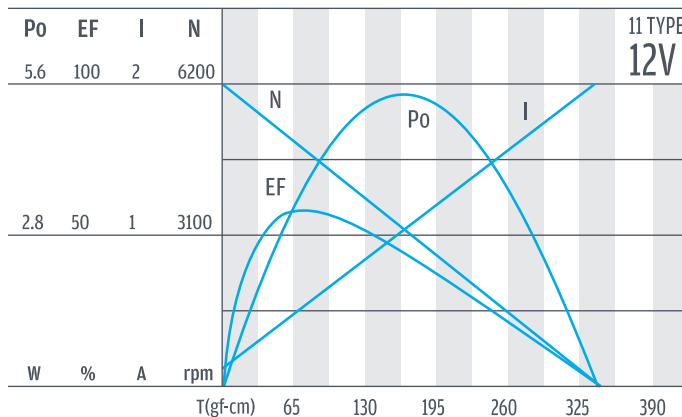
齒輪箱馬達轉矩 & 速度 / Gear Motor Torque & Speed

減速比 Reduction ratio	1/18	1/30	1/50	1/60	1/75	1/90	1/100	1/120	1/150	1/180	1/200	1/250	1/300	1/500	1/600	1/750	1/1000	1/1500	1/3000	
12V 定格扭力 Rated torque (kgf-cm)	0.8	1.2	2	2	2.9	3	3	4	4	4	4	4	4	4	4	4	4	4	4	
12V 定格轉速 Rated speed (rpm)	270	172	100	85	67	57.5	52	43	36	31	29	23	20.5	12	10	8	6.2	4.1	2.1	
24V 定格扭力 Rated torque (kgf-cm)	0.8	1.2	2	2	3	3	3	4	4	4	4	4	4	4	4	4	4	4	4	
24V 定格轉速 Rated speed (rpm)	278	170	98	84	65	57	51	42	35	31	29	23	20	12	10	8	6.2	4.1	2.1	
軸心迴轉方向 Rotation direction	CCW				CW				CCW				CW				CCW			
長度 Length (L)	22				24.5				27				29.5				32			

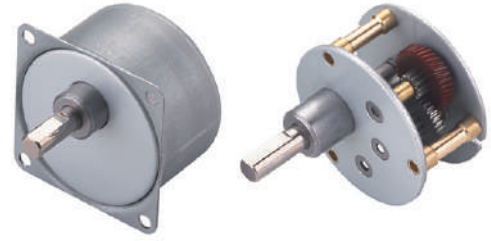
馬達單體型式 / Motor Data

定格電壓 Rated volt (V)	定格扭力 Rated torque (gf-cm)	定格轉速 Rated speed (rpm)	定格電流 Rated current (A)	無負荷轉速 No load speed (rpm)	無負荷電流 No load current (A)	定格出力 Rated output (W)	重量 Weight (g)
12	60	5100	≤0.47	6200	≤0.12	3.14	75
24	62	5000	≤0.21	6200	≤0.06	3.17	75

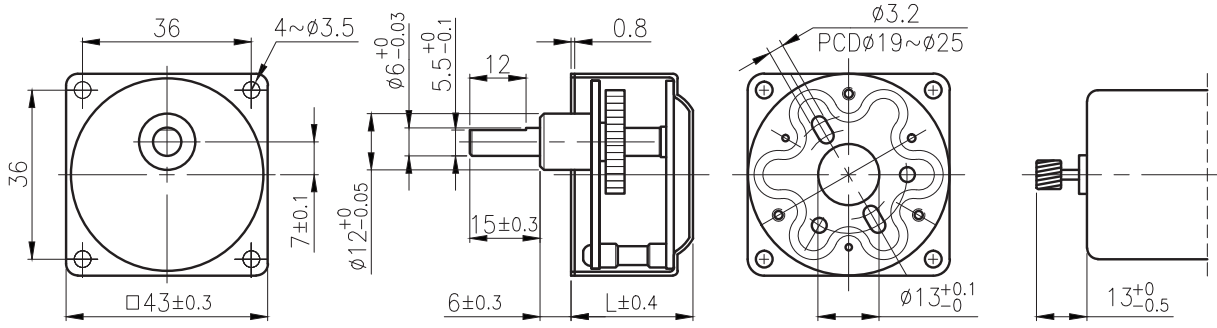
馬達單體特性 / Motor Characteristics



RB-40



外形尺寸 & 馬達齒鉚合尺寸 / Appearance Size & Pinion Assembly Dimension



unit:mm

產品規格 / Product Specifications

外殼材質 Housing material	輸出軸承型式 Output shaft bearing	徑向負荷 Radial load (10mm from flange)	軸向負荷 Shaft axial load	主軸最大承受壓入力 Shaft press fit force	徑向間隙 Radial play of shaft	軸向間隙 Thrust play of shaft	背隙 (無負荷時) Backlash, at no-load
金屬 Metal	含油軸承 Sleeve bearing	≤ 1 kgf	≤ 0.7 kgf	≤ 20 kgf	≤ 0.05 mm	≤ 0.35 mm	≤ 2°

馬達齒輪型式 / Pinion Specifications

模數 Module	齒數 No. of teeth	壓力角 Pressure angle	螺旋角 Helix angle	孔徑 (mm) Hole diameter	減速比 Reduction ratio
0.5	10	20°	--	ø2.28, ø3.16	全種通用 Practicable
0.4	12	20°	18 (Left, 左)	ø3.16	全種通用 Practicable

標準減速比型式 / Gearboxes Specifications

減速比 Reduction ratio	1/10	1/15	1/18	1/25	1/30	1/36	1/50	1/60	1/75	1/90	1/100	1/120	1/150	1/180	1/200	1/250	1/300	1/360	1/400	1/500
定格容許扭力 (kgf-cm max.) Rated tolerance torque	1	3	3	4	4	4	5	5	5	7	7	7	7	7	7	7	7	7	7	7
瞬間容許扭力 (kgf-cm) Max momentary tolerance torque	3	9	9	12	12	12	15	15	15	21	21	21	21	21	21	21	21	21	21	21
效率 Efficiency	81%	73%	73%	73%	73%	73%	66%	66%	66%	66%	66%	66%	66%	59%	59%	59%	59%	59%	59%	59%
長度 (L) Length (L)	23.9	26.4	26.4	26.4	26.4	26.4	28.9	28.9	28.9	28.9	28.9	28.9	28.9	31.4	31.4	31.4	31.4	31.4	31.4	31.4
重量 Weight (g)	110	116	116	116	116	116	125	125	125	125	125	125	125	130	130	130	130	130	130	130

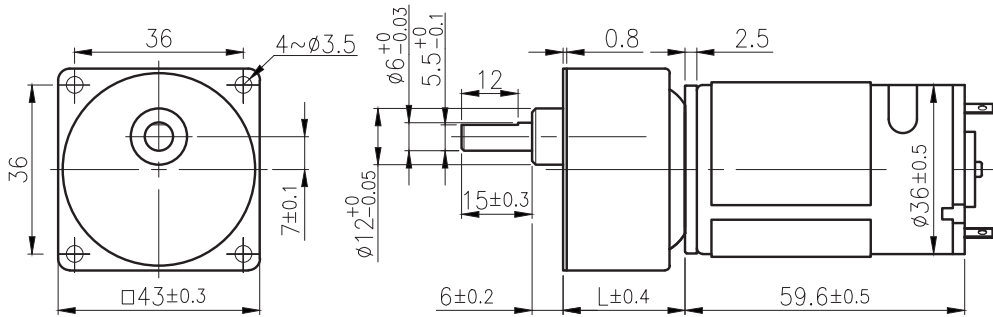
- 使用相對溼度：20%~85%RH
Operating relative humidity
- 使用溫度範圍：-10°C~+60°C
Operating temperature range

RB-40GM

03 & 04 TYPE



外形尺寸 / Appearance Size



unit:mm

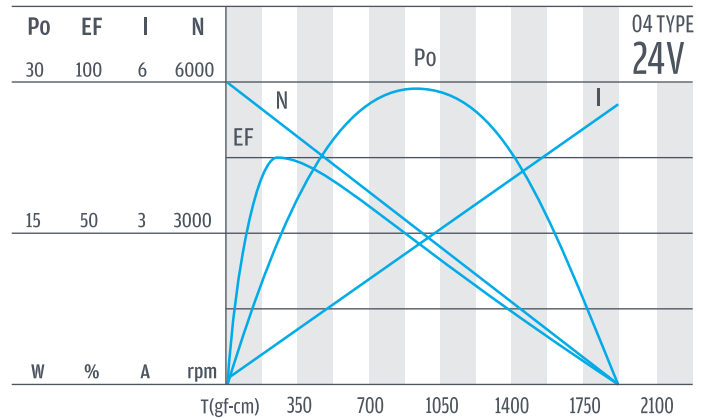
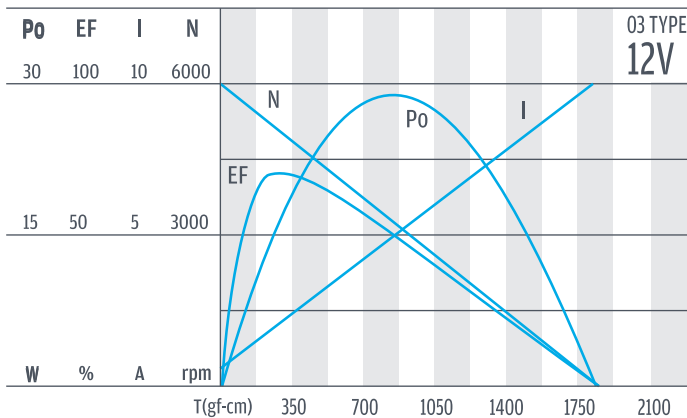
齒輪箱馬達轉矩 & 速度 / Gear Motor Torque & Speed

減速比 Reduction ratio	1/10	1/15	1/18	1/25	1/30	1/36	1/50	1/60	1/75	1/90	1/100	1/120	1/150	1/180	1/200	1/250	1/300	1/360	1/400	1/500	
12V																					
定格扭力 Rated torque (kgf-cm)	1	2.7	3	4	4	4	5	5	5	7	7	7	7	7	7	7	7	7	7	7	
定格轉速 Rated speed (rpm)	519	321	275	198	172	145	103	91	72.5	61	54	46	37	31	28.2	22.5	19.2	16	14.5	11.8	
24V																					
定格扭力 Rated torque (kgf-cm)	1	2.6	3	4	4	4	5	5	5	7	7	7	7	7	7	7	7	7	7	7	
定格轉速 Rated speed (rpm)	530	340	283	207	176	149	107	92	73	61	54	46	37	31	28.5	23	19.1	16.2	14.5	11.8	
軸心迴轉方向 Rotation direction	CCW			CW						CCW						CW					
長度 Length (L)	23.9			26.4						28.9						31.4					

馬達單體型式 / Motor Data

定格電壓 Rated volt (V)	定格扭力 Rated torque (gf-cm)	定格轉速 Rated speed (rpm)	定格電流 Rated current (A)	無負荷轉速 No load speed (rpm)	無負荷電流 No load current (A)	定格出力 Rated output (W)	重量 Weight (g)
12	250	4930	≤ 1.6	6000	≤ 0.25	12.80	220
24	240	5150	≤ 0.75	6000	≤ 0.13	12.70	220

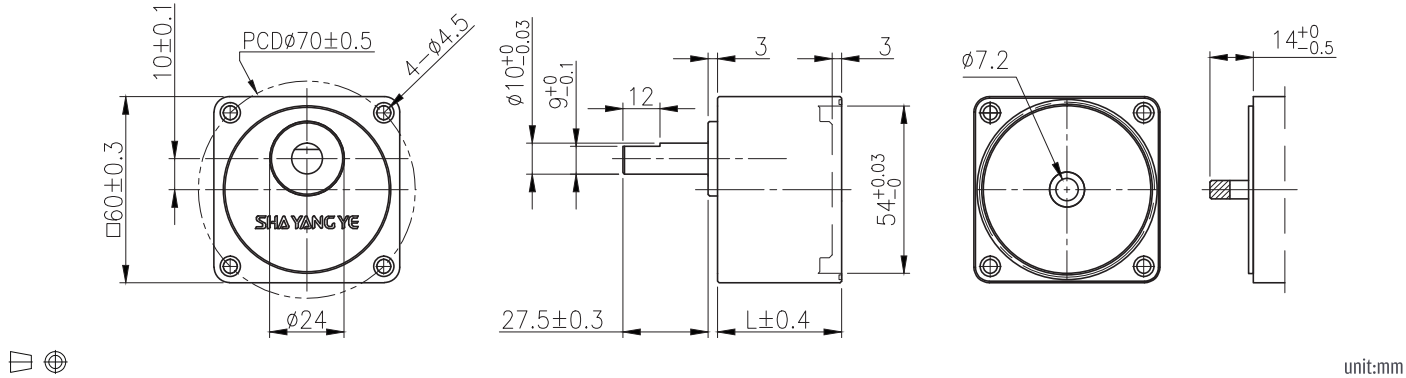
馬達單體特性 / Motor Characteristics



RB-60W



外形尺寸 & 馬達齒鉤合尺寸 / Appearance Size & Pinion Assembly Dimension



產品規格 / Product Specifications

外殼材質 Housing material	輸出軸承型式 Output shaft bearing	徑向負荷 Radial load (5mm from flange)	軸向負荷 Shaft axial load	主軸承受壓入力 Shaft press fit force	徑向間隙 Radial play of shaft	軸向間隙 Thrust play of shaft	背隙 (無負荷時) Backlash, at no-load
金屬 Metal	滾珠軸承 Ball bearings	≤ 10 kgf	≤ 4 kgf	≤ 20 kgf	≤ 0.05 mm	≤ 0.5 mm	≤ 3°

馬達齒輪型式 / Pinion Specification

模數 Module	齒數 No. of teeth	壓力角 Pressure angle	螺旋角 Helix angle	減速比 Reduction ratio
0.4	10	20°	30° (right)	全機種通用 Practicable

標準減速比型式 / Gearboxes Specifications

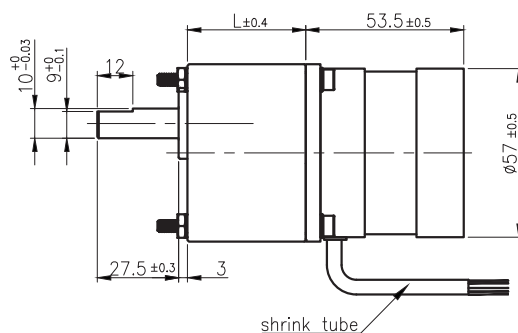
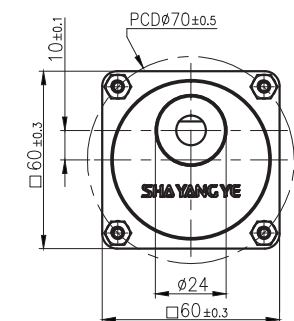
減速比 Reduction ratio	1/6	1/9	1/18	1/25	1/30	1/50	1/100	1/180							
定格容許扭力 (kgf-cm max.) Rated tolerance torque	5.2	10	16	21	30	49	60	60							
瞬間容許扭力 (kgf-cm) Max momentary tolerance torque	10.4	20	32	42	60	98	120	120							
效率 Efficiency	81%	81%	81%	73%	73%	66%	66%	66%							
長度 Length (L)	34	34	34	37	37	40	40	40							
重量 Weight (g)	295	295	295	320	320	350	350	350							

- 使用相對溼度：20%~85%RH
Operating relative humidity
- 使用溫度範圍：-10°C~+60°C
Operating temperature range

RB-60WGM 42 TYPE



外形尺寸 / Appearance Size



Pin No	Color	Function	Length
1	Yellow	U	600mm
2	Green	V	
3	Blue	W	
4	Red	+5V	
5	Yellow	HU	
6	Green	HV	
7	Blue	HW	
8	Black	GND	

unit:mm

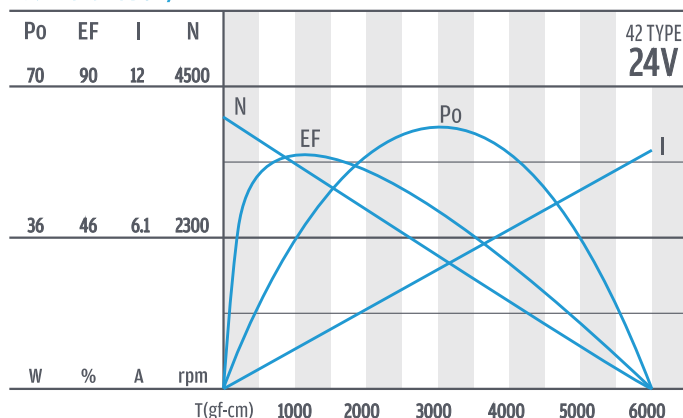
齒輪箱馬達轉矩 & 速度 / Gear Motor Torque & Speed

24V	減速比 Reduction ratio	1/6	1/9	1/18	1/25	1/30	1/50	1/100	1/180						
	定格扭力 Rated torque(kgf-cm)	4.5	6.7	13.4	16.7	20	30	60	60						
定格轉速 Rated speed(rpm)	567	377	189	136	113	68	34	20.6							

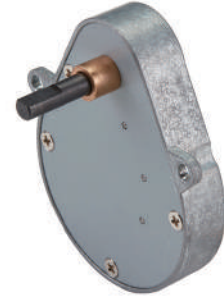
馬達單體型式 / Motor Data

定格電壓 Rated volt (V)	定格扭力 Rated torque (gf-cm)	定格轉速 Rated speed (rpm)	定格電流 Rated current (A)	無負荷轉速 No load speed (rpm)	無負荷電流 No load current (A)	定格出力 Rated output (W)	重量 Weight (g)
24	917	3400	≤1.93	4100	≤0.38	33.56	451

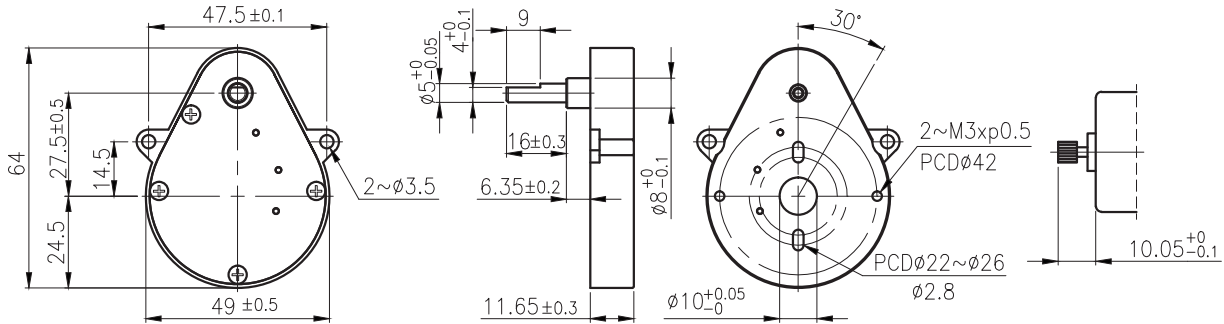
馬達單體特性 / Motor Characteristics



RB-64



外形尺寸 & 馬達齒鉚合尺寸 / Appearance Size & Pinion Assembly Dimension



unit:mm

產品規格 / Product Specifications

外殼材質 Housing material	輸出軸承型式 Output shaft bearing	徑向負荷 Radial load (5mm from flange)	軸向負荷 Shaft axial load	主軸承受壓入力 Shaft press fit force	徑向間隙 Radial play of shaft	軸向間隙 Thrust play of shaft	背隙(無負荷時) Backlash, at no-load
金屬 Metal	含油軸承 Sleeve bearing	≤ 0.8 kgf	≤ 0.6 kgf	≤ 10 kgf	≤ 0.05 mm	≤ 0.35 mm	≤ 2°

馬達齒輪型式 / Pinion Specifications

模數 Module	齒數 No. of teeth	壓力角 Pressure angle	孔徑 (mm) Hole diameter	減速比 Reduction ratio
0.3	15	20°	∅ 2.48, ∅ 2.98	全機種適用 Practicable

標準減速比型式 / Gearboxes Specifications

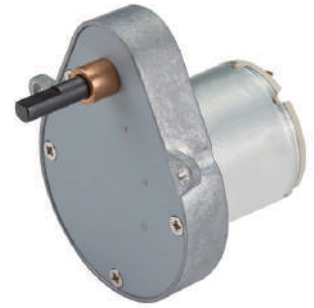
減速比 Reduction ratio	1/30	1/45	1/60	1/90	1/120	1/150	1/225	1/340
定格容許扭力 (kgf-cm max.) Rated tolerance torque					3			
瞬間容許扭力 (kgf-cm) Max momentary tolerance torque					9			
效率 Efficiency					66%			
重量 Weight (g)					90			

- 使用相對溼度 : 20%~85%RH
Operating relative humidity
- 使用溫度範圍 : -10°C~+60°C
Operating temperature range

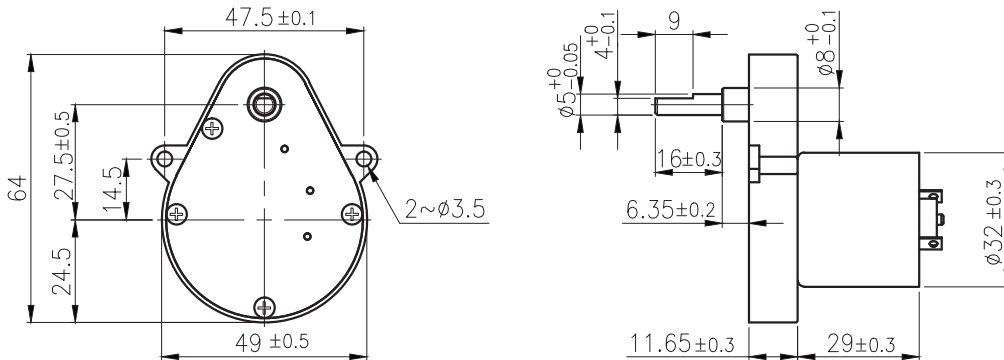
- 使用相對溼度 : 20%~85%RH
Operating relative humidity
- 使用溫度範圍 : -10°C~+60°C
Operating temperature range

RB-64GM

11 & 12 TYPE



外形尺寸/ Appearance Size



unit:mm

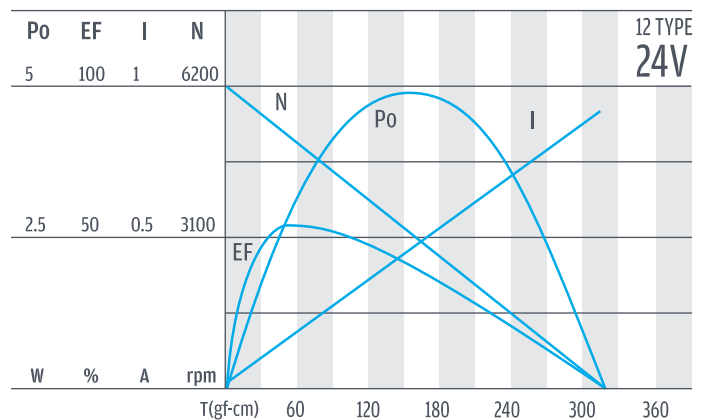
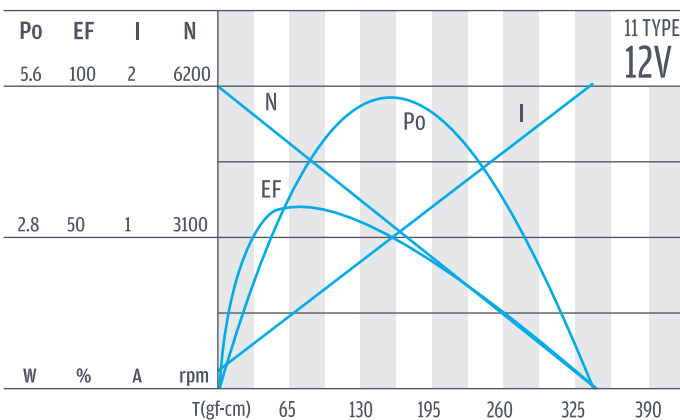
齒輪箱馬達轉矩 & 速度/ Gear Motor Torque & Speed

		減速比 Reduction ratio	1/30	1/45	1/60	1/90	1/120	1/150	1/225	1/340
12V	定格扭力 Rated torque (kgf-cm)		1.2	1.8	2.3	3	3	3	3	3
	定格轉速 Rated speed (rpm)		170	113	84	57	45	37	25	17
24V	定格扭力 Rated torque (kgf-cm)		1.3	1.9	2.6	3	3	3	3	3
	定格轉速 Rated speed (rpm)		162	109	81	57	45	37	25	17
軸心迴轉方向 Rotation direction			CW							

馬達單體型式/ Motor Data

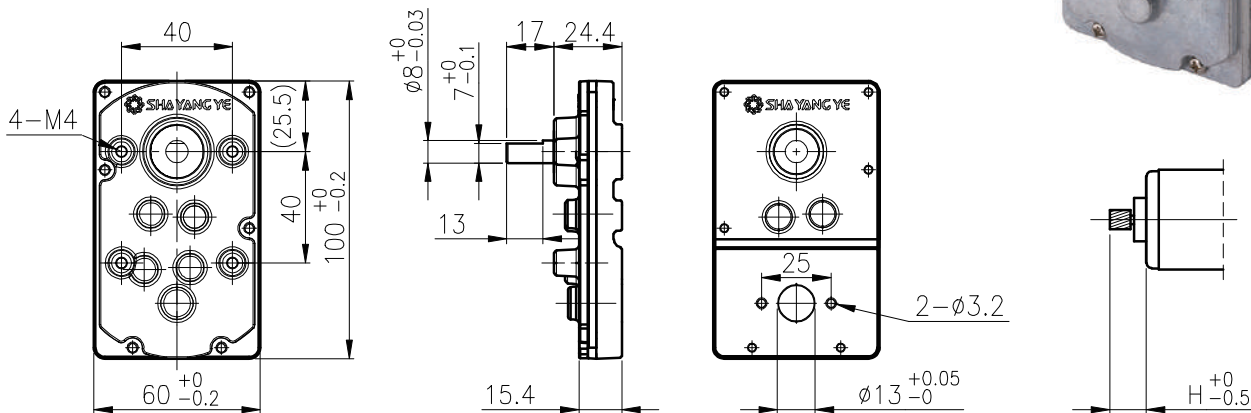
定格電壓 Rated volt (V)	定格扭力 Rated torque (gf-cm)	定格轉速 Rated speed (rpm)	定格電流 Rated current (mA)	無負荷轉速 No load speed (rpm)	無負荷電流 No load current (mA)	定格出力 Rated output (W)	重量 Weight (g)
12	60	5100	≤470	6200	≤120	3.14	75
24	62	5000	≤210	6200	≤60	3.17	75

馬達單體特性/ Motor Characteristics



RB-99W

外形尺寸 & 馬達齒鉤合尺寸 / Appearance Size & Pinion Assembly Dimension



unit:mm

產品規格 / Product Specifications

外殼材質 Housing material	輸出軸承型式 Output shaft bearing	徑向負荷 Radial load (10mm from flange)	軸向負荷 Shaft axial load	主軸承受壓入力 Shaft press fit force	徑向間隙 Radial play of shaft	軸向間隙 Thrust play of shaft	背隙 (無負荷時) Backlash, at no-load
金屬 Metal	含油軸承 Sleeve bearing	≤ 3 kgf	≤ 5 kgf	≤ 30 kgf	≤ 0.10 mm	≤ 0.35 mm	≤ 3°

馬達齒輪型式 / Pinion Specifications

模數 Module	齒數 No. of teeth	壓力角 Pressure angle	螺旋角 Helix angle	孔徑 (mm) Hole diameter	減速比 Reduction ratio
0.5	11	20°	18° (左, left)	ø 3.16	1/30, 1/100, 1/147, 1/305, 1/459
0.5	13	20°	18° (左, left)	ø 3.16	1/24, 1/54, 1/81, 1/246

標準減速比型式 / Gearboxes Specifications

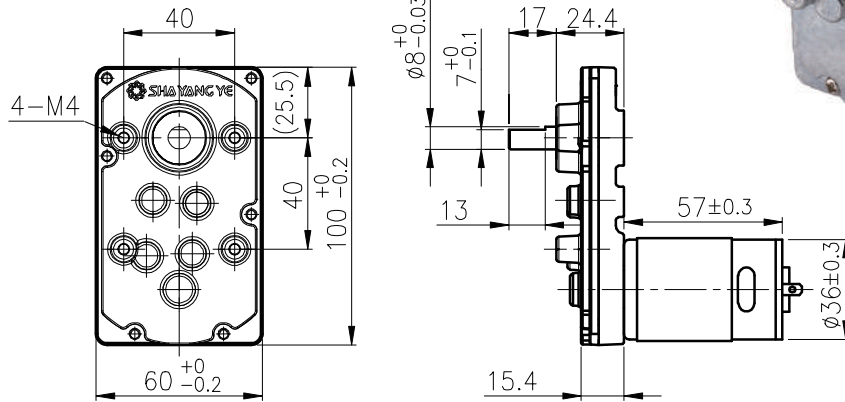
減速比 Reduction ratio	1/24, 1/30	1/54	1/81, 1/100	1/147	1/246, 1/305	1/459
定格容許扭力 (kgf-cm max.) Rated tolerance torque	3	6	8	8	10	10
瞬間容許扭力 (kgf-cm) Max momentary tolerance torque	9	18	24	24	30	30
效率 Efficiency	73%			66%		
馬達齒高度 Pinion Height (H)	10.6			7		
重量 Weight	325			340		

- 使用相對溼度：20%~85%RH
Operating relative humidity
- 使用溫度範圍：-10°C~+60°C
Operating temperature range

RB-99WGM

01 & 02 TYPE

外形尺寸/ Appearance Size



unit:mm

齒輪箱馬達轉矩 & 速度/ Gear Motor Torque & Speed

減速比 Reduction ratio	1/24	1/30	1/54	1/81	1/100	1/147	1/246	1/305	1/459
12V 定格扭力 Rated torque (kgf-cm)	3	3	6	8	8	8	10	10	10
12V 定格轉速 Rated speed (rpm)	210	170	93	63	52	35	22	17	12
24V 定格扭力 Rated torque (kgf-cm)	3	3	6	8	8	8	10	10	10
24V 定格轉速 Rated speed (rpm)	210	170	93	63	52	35	22	17	12
軸心迴轉方向 Rotation direction	CW				CCW				

馬達單體型式/ Motor Data

定格電壓 Rated volt (V)	定格扭力 Rated torque (gf-cm)	定格轉速 Rated speed (rpm)	定格電流 Rated current (A)	無負荷轉速 No load speed (rpm)	無負荷電流 No load current (A)	定格出力 Rated output (W)	重量 Weight (g)
12	250	4930	≤1.6	6000	≤0.25	12.80	220
24	240	5150	≤0.75	6000	≤0.13	12.70	220

馬達單體特性/ Motor Characteristics

