

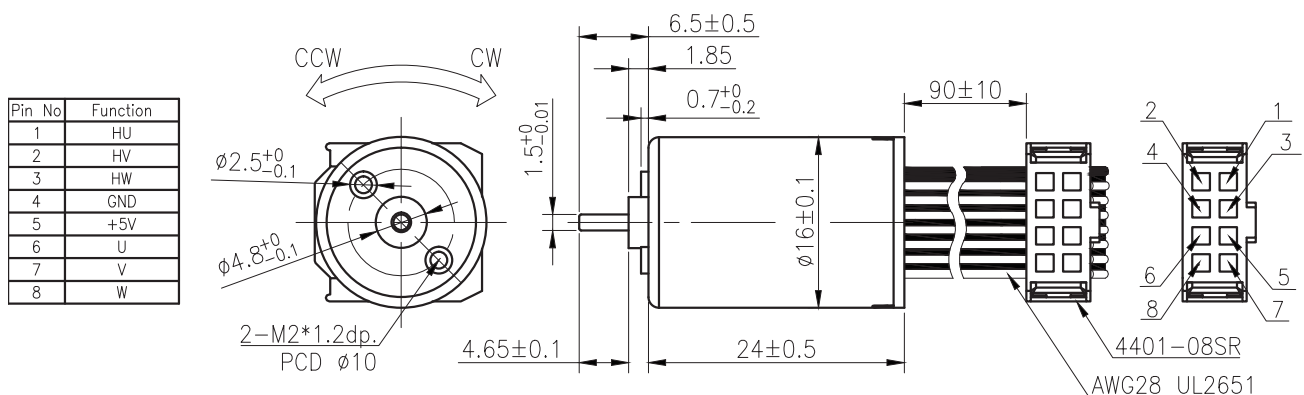
Brushless Motor

BL series

BLE-1624



外型尺寸/ Appearance Size

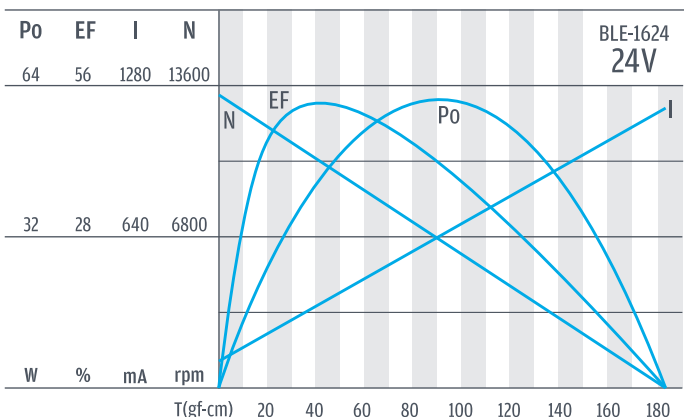
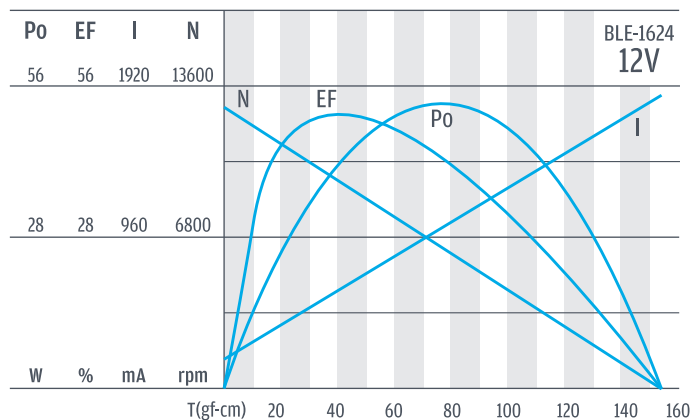
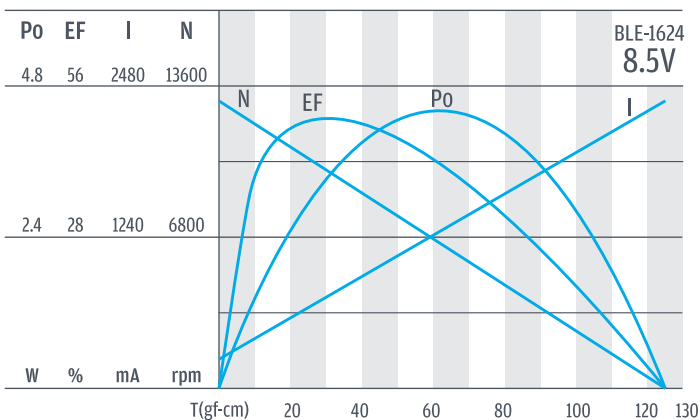


unit:mm

馬達單體型式/Motor Data

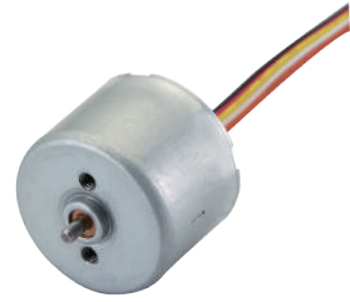
定格電壓 Rated volt (V)	定格扭力 Rated torque (gf-cm)	定格轉速 Rated speed (rpm)	定格電流 Rated current (mA)	無負荷轉速 No load speed (rpm)	無負荷電流 No load current (mA)	定格出力 Rated output (W)	最大效率 Max. efficiency (%)	重量 Weight (g)
8.5	30	10000	900	13300	250	3.08	50	20
12	35	9700	700	12500	220	3.49	50	20
24	40	10000	450	13300	200	4.11	50	20

馬達單體特性/Motor Characteristics

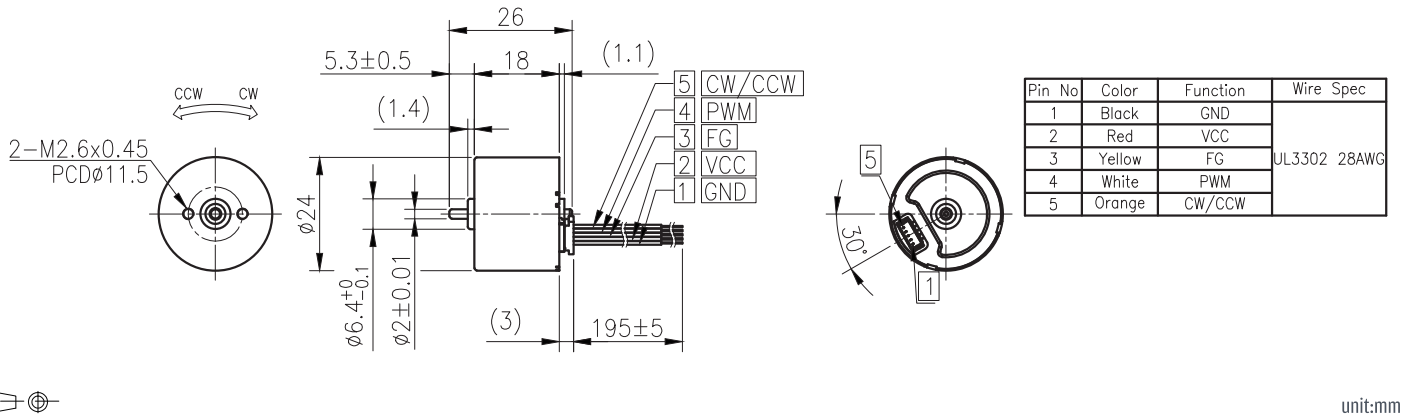


- 使用相對溼度：20%~85%RH
Operating relative humidity
- 使用溫度範圍：-10°C~+60°C
Operating temperature range

BLB-2418



外型尺寸 / Appearance Size

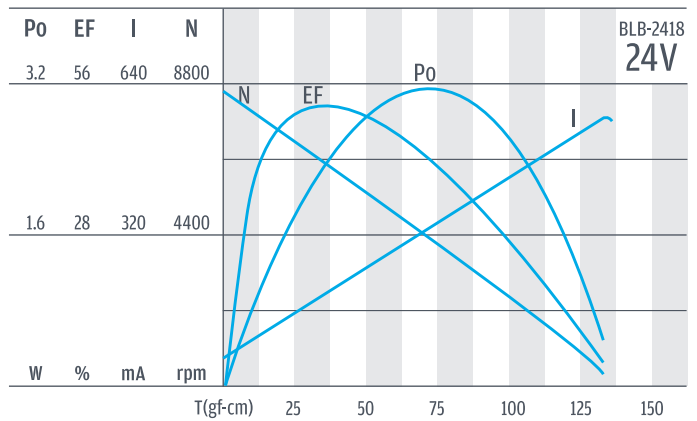
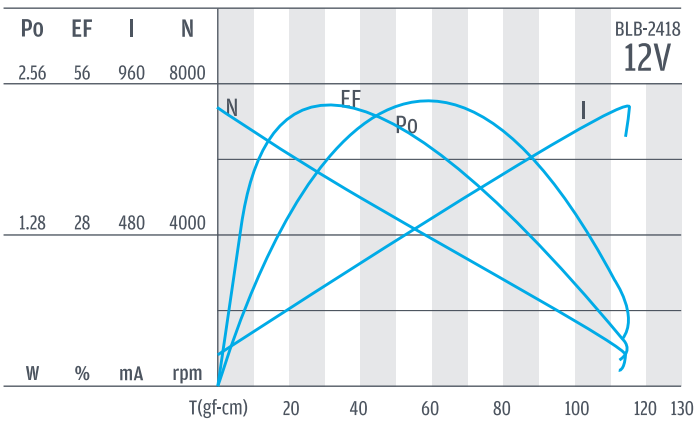


unit:mm

馬達單體型式/Motor Data

定格電壓 Rated volt (V)	定格扭力 Rated torque (gf-cm)	定格轉速 Rated speed (rpm)	定格電流 Rated current (mA)	無負荷轉速 No load speed (rpm)	無負荷電流 No load current (mA)	定格輸出 Rated output (W)	最大效率 Max. efficiency (%)	重量 Weight (g)
12	30	5340	350	7400	200	1.65	50	28
24	28	6700	220	8700	180	1.93	50	28

馬達單體特性/Motor Characteristics

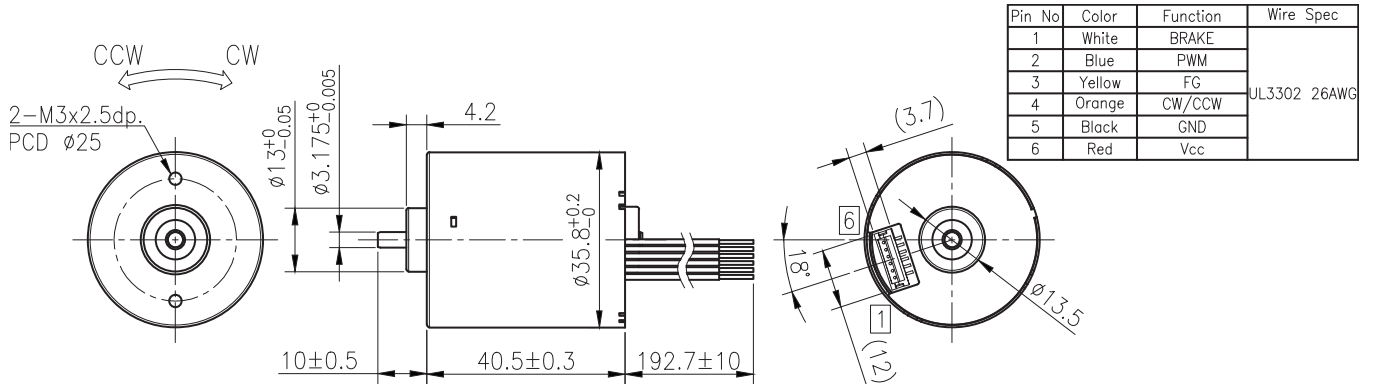


- 使用相對溼度：20%~85%RH
Operating relative humidity
- 使用溫度範圍：-10°C~+60°C
Operating temperature range

BLB-3640



外型尺寸 / Appearance Size

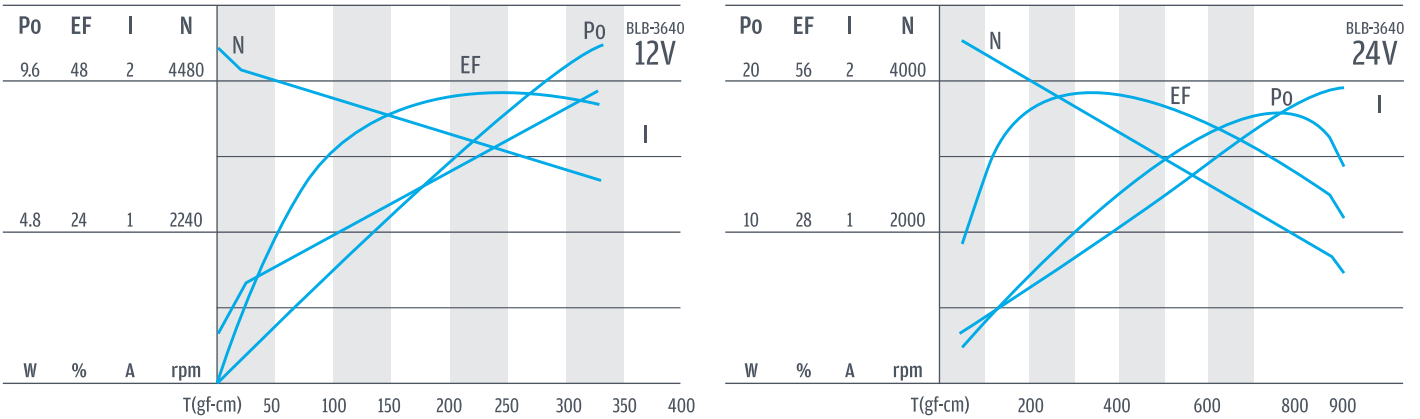


unit:mm

馬達單體型式 / Motor Data

定格電壓 Rated volt (V)	定格扭力 Rated torque (gf-cm)	定格轉速 Rated speed (rpm)	定格電流 Rated current (A)	無負荷轉速 No load speed (rpm)	無負荷電流 No load current (A)	定格出力 Rated output (W)	最大效率 Max. efficiency (%)	重量 Weight (g)
12	140	4000	1.28	5000	0.53	5.7	45	160
24	220	3900	0.8	5000	0.27	8.8	55	160

馬達單體特性 / Motor Characteristics



- 使用相對溼度：20%~85%RH
Operating relative humidity
- 使用溫度範圍：-10°C~+60°C
Operating temperature range

PG

IG

Right Angle

RA

RB

WG

SD

BLDC

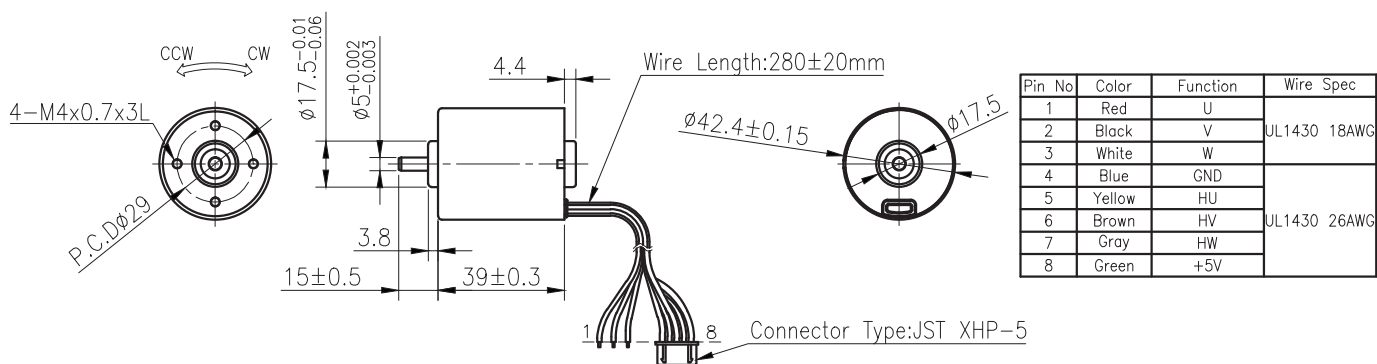
Encoder

Driver

BLA-4239



外型尺寸 / Appearance Size

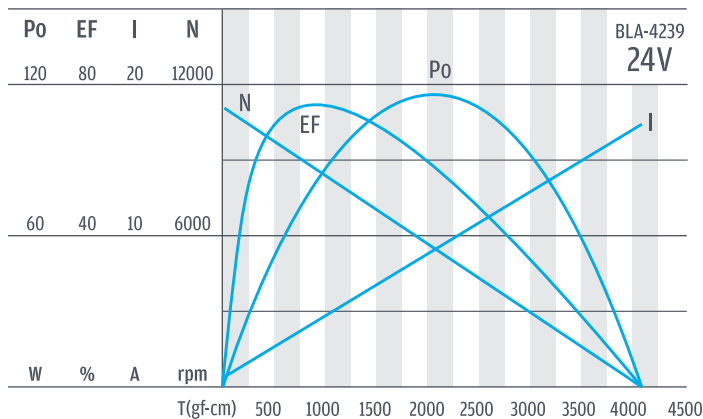
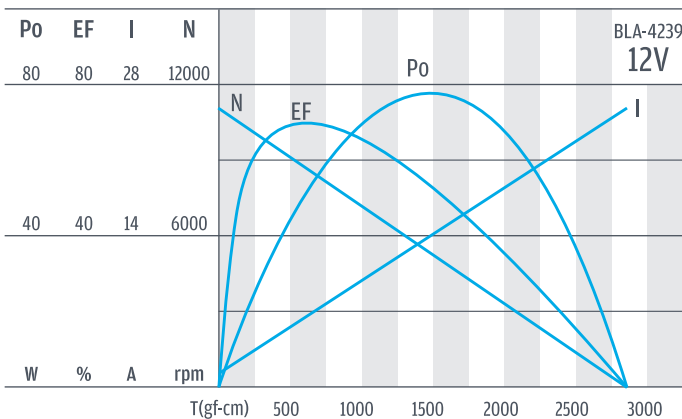


unit:mm

馬達單體型式 / Motor Data

定格電壓 Rated volt (V)	定格扭力 Rated torque (gf-cm)	定格轉速 Rated speed (rpm)	定格電流 Rated current (A)	無負荷轉速 No load speed (rpm)	無負荷電流 No load current (A)	定格出力 Rated output (W)	最大效率 Max. efficiency (%)	重量 Weight (g)
12	450	9000	5.8	11000	1.6	41.5	70	196
24	600	9000	3.65	11000	0.9	55.4	70	196

馬達單體特性 / Motor Characteristics



- 使用相對溼度：20%~85%RH
Operating relative humidity
- 使用溫度範圍：-10°C~+60°C
Operating temperature range

PG

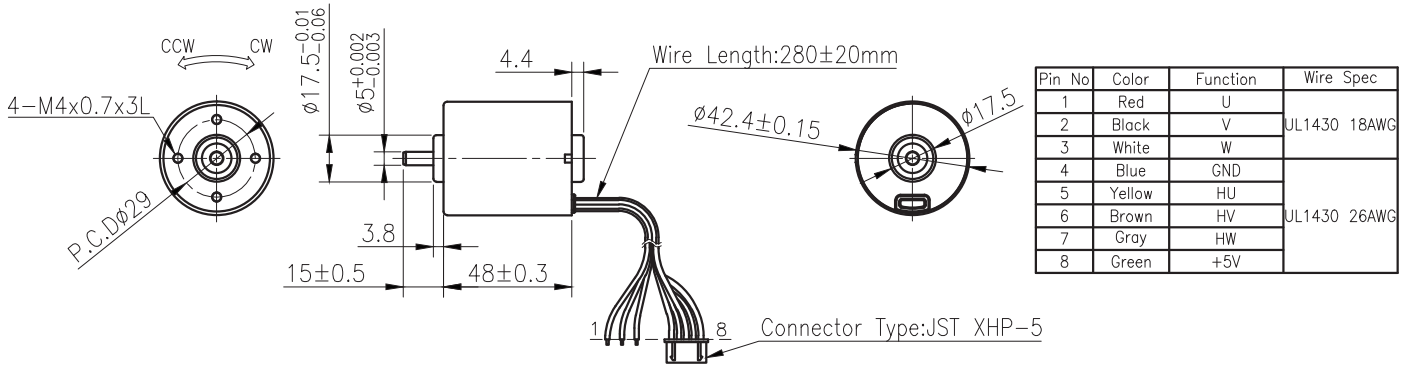
BLA-4248



IG

外型尺寸/ Appearance Size

Right Angle



RA



unit:mm

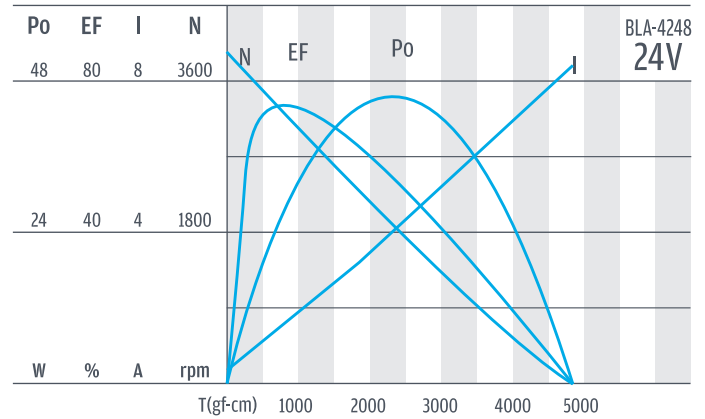
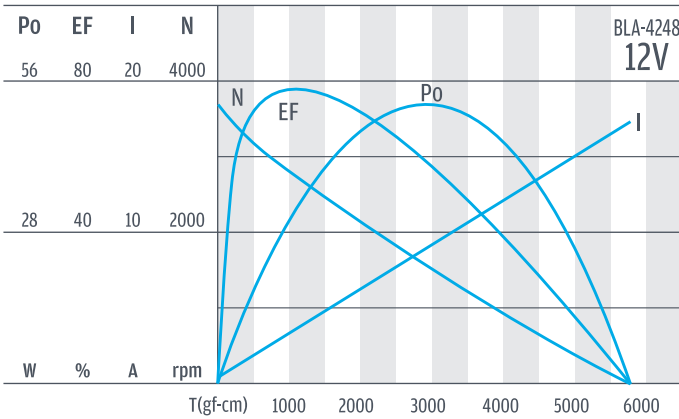
RB

馬達單體型式/Motor Data

定格電壓 Rated volt (V)	定格扭力 Rated torque (gf-cm)	定格轉速 Rated speed (rpm)	定格電流 Rated current (A)	無負荷轉速 No load speed (rpm)	無負荷電流 No load current (A)	定格出力 Rated output (W)	最大效率 Max. efficiency (%)	重量 Weight (g)
12	800	3000	3.15	3800	0.5	24.6	70	265
24	800	3000	1.7	3800	0.32	24.6	70	265

WG

馬達單體特性/Motor Characteristics



SD

BLDC

- 使用相對溼度：20%~85%RH
Operating relative humidity
- 使用溫度範圍：-10°C~+60°C
Operating temperature range

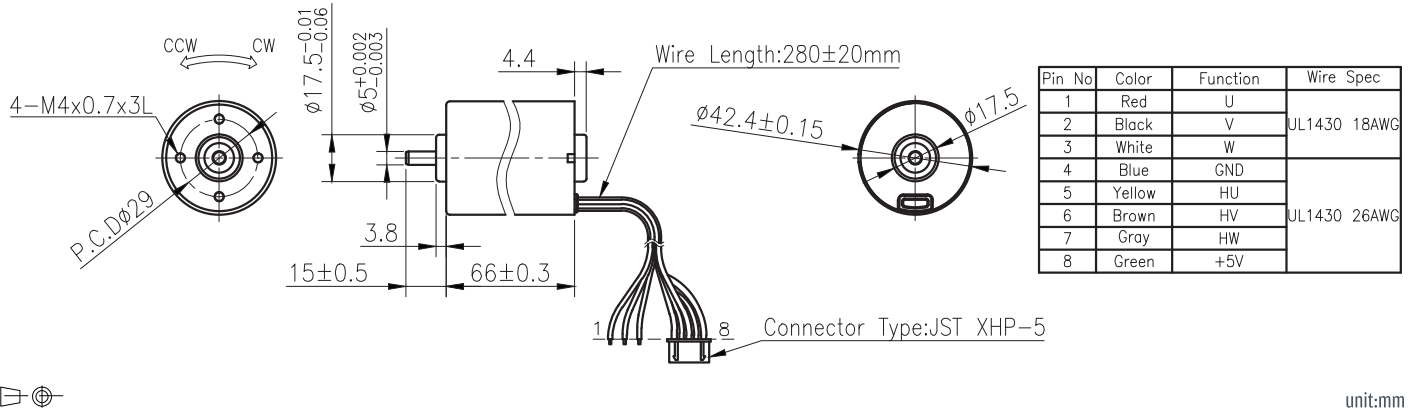
Encoder

Driver

BLA-4266



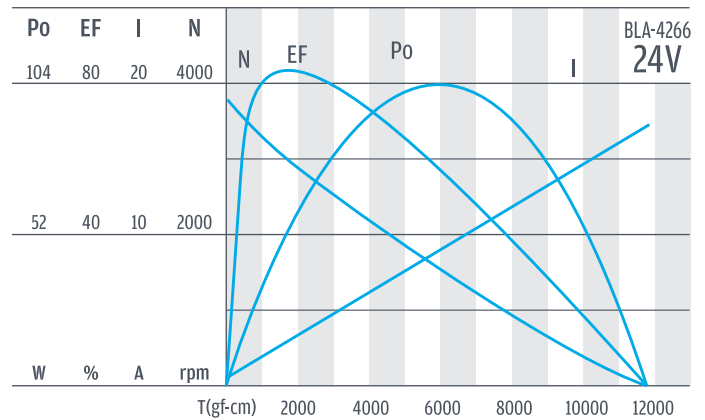
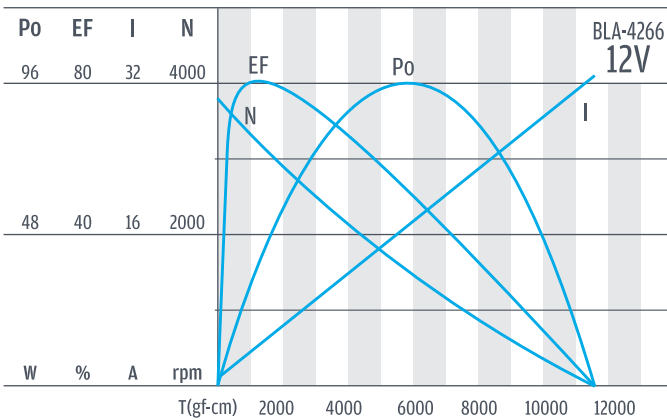
外型尺寸 / Appearance Size



馬達單體型式 / Motor Data

定格電壓 Rated volt (V)	定格扭力 Rated torque (kgf-cm)	定格轉速 Rated speed (rpm)	定格電流 Rated current (A)	無負荷轉速 No load speed (rpm)	無負荷電流 No load current (A)	定格出力 Rated output (W)	最大效率 Max. efficiency (%)	重量 Weight (g)
12	1.6	3000	5.8	3800	0.7	49.2	70	425
24	1.6	3000	3	3800	0.44	49.2	70	425

馬達單體特性 / Motor Characteristics

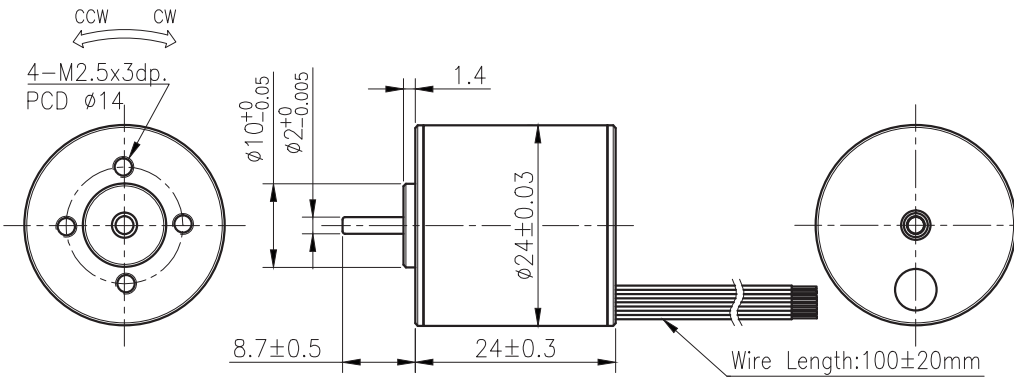


- 使用相對溼度：20%~85%RH
Operating relative humidity
- 使用溫度範圍：-10°C~+60°C
Operating temperature range

BLC-2424



外型尺寸/ Appearance Size



Pin No	Color	Function	Wire Spec
1	Red	U	UL1430 22AWG
2	Black	V	
3	White	W	
4	Blue	GND	
5	Yellow	HU	UL1430 26AWG
6	Brown	HV	
7	Gray	HW	
8	Green	+5V	

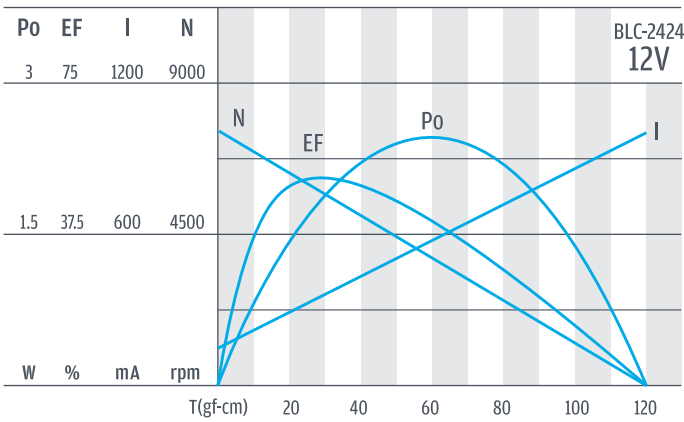


unit:mm

馬達單體型式/Motor Data

定格電壓 Rated volt (V)	定格扭力 Rated torque (gf-cm)	定格轉速 Rated speed (rpm)	定格電流 Rated current (A)	無負荷轉速 No load speed (rpm)	無負荷電流 No load current (A)	定格出力 Rated output (W)	最大效率 Max. efficiency (%)	重量 Weight (g)
12	15	6500	0.25	7400	0.21	1	50	35

馬達單體特性/Motor Characteristics



- 使用相對溼度：20%~85%RH
Operating relative humidity
- 使用溫度範圍：-10°C~+60°C
Operating temperature range

PG

IG

Right Angle

RA

RB

WG

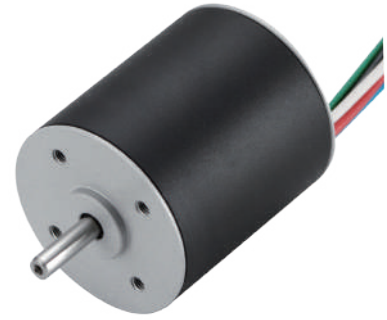
SD

BLDC

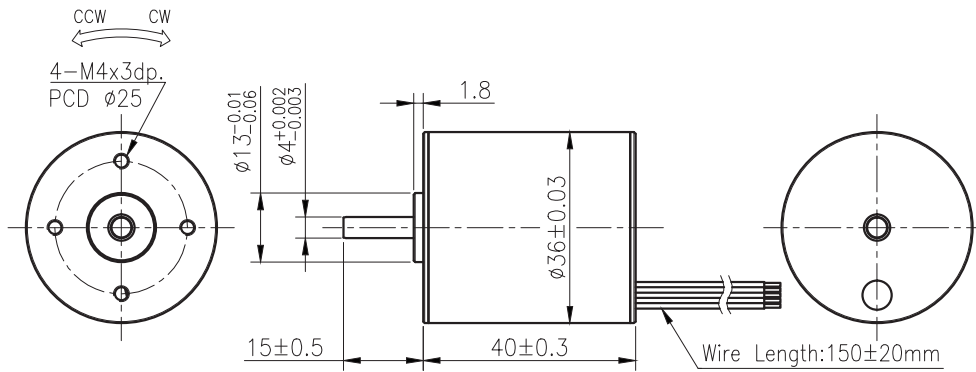
Encoder

Driver

BLC-3640



外型尺寸/ Appearance Size



Pin No	Color	Function	Wire Spec
1	Red	U	UL1430 20AWG
2	Black	V	
3	White	W	UL1430 26AWG
4	Blue	GND	
5	Yellow	HU	
6	Brown	HV	
7	Gray	HW	
8	Green	+5V	

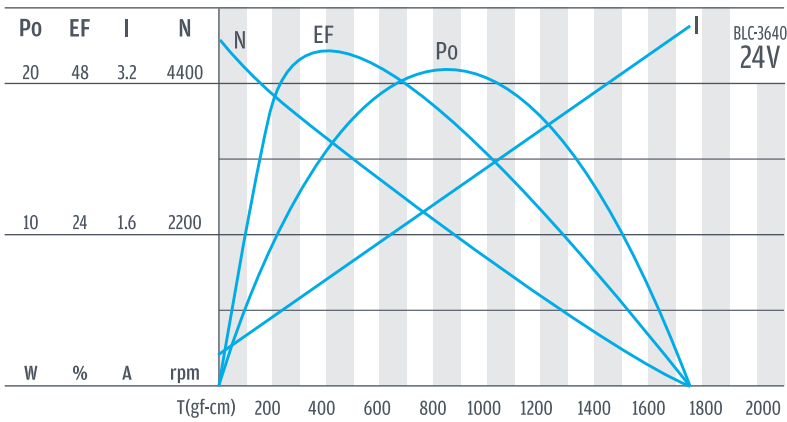


unit:mm

馬達單體型式/Motor Data

定格電壓 Rated volt (V)	定格扭力 Rated torque (gf-cm)	定格轉速 Rated speed (rpm)	定格電流 Rated current (A)	無負荷轉速 No load speed (rpm)	無負荷電流 No load current (A)	定格出力 Rated output (W)	最大效率 Max. efficiency (%)	重量 Weight (g)
24	400	3600	1.3	5000	0.45	14.7	54	180

馬達單體特性/Motor Characteristics



- 使用相對溼度：20%~85%RH
Operating relative humidity
- 使用溫度範圍：-10°C~+60°C
Operating temperature range

PG

IG

Right Angle

RA

RB

WG

SD

BLDC

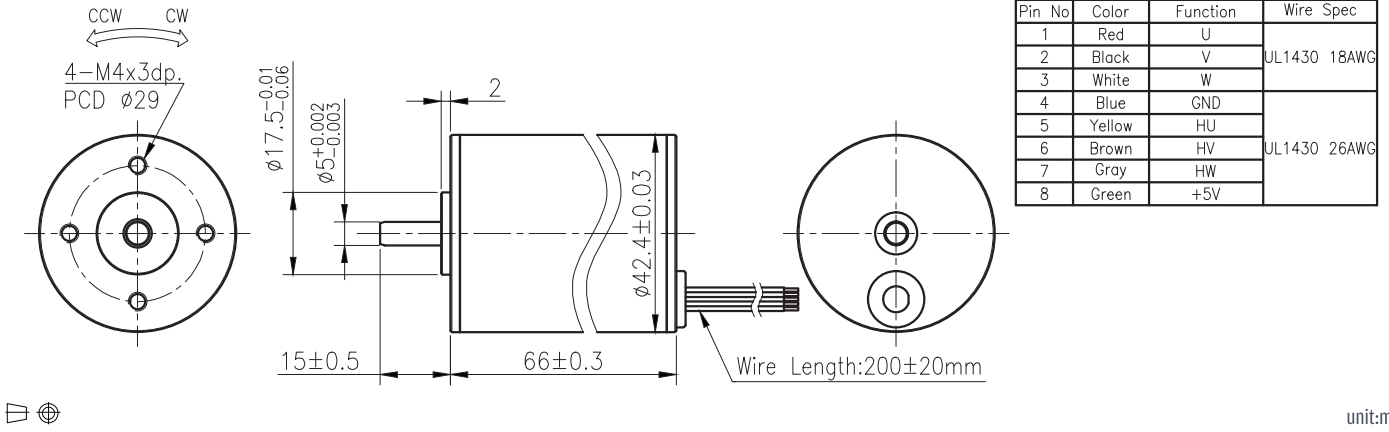
Encoder

Driver

BLC-4266



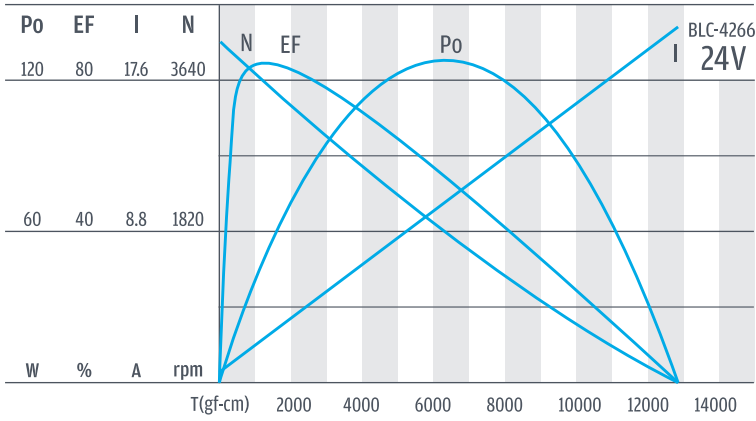
外型尺寸/ Appearance Size



馬達單體型式/Motor Data

定格電壓 Rated volt (V)	定格扭力 Rated torque (kgf-cm)	定格轉速 Rated speed (rpm)	定格電流 Rated current (A)	無負荷轉速 No load speed (rpm)	無負荷電流 No load current (A)	定格出力 Rated output (W)	最大效率 Max. efficiency (%)	重量 Weight (g)
24	2.5	3000	4.9	4000	0.5	77	80	360

馬達單體特性/Motor Characteristics

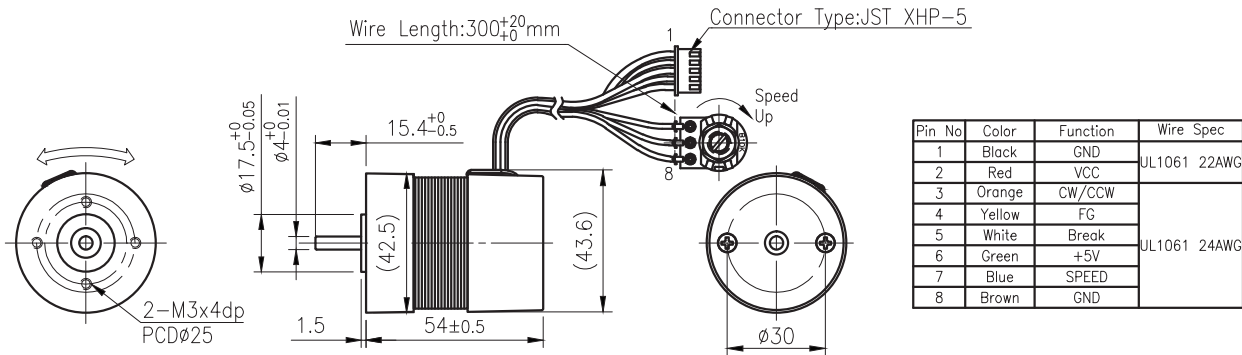


- 使用相對溼度：20%~85%RH
Operating relative humidity
- 使用溫度範圍：-10°C~+60°C
Operating temperature range

BL-4254H



外形尺寸/ Appearance Size

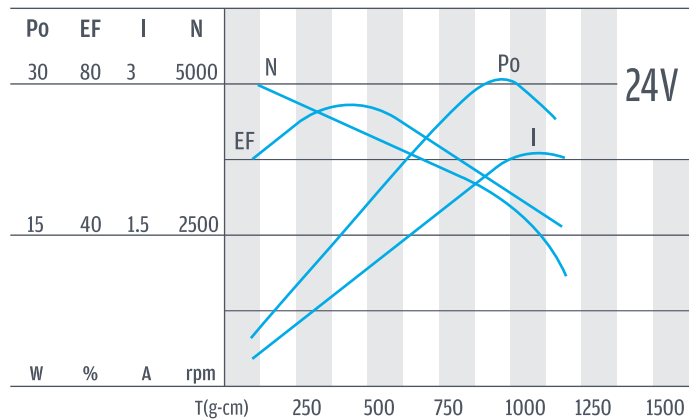
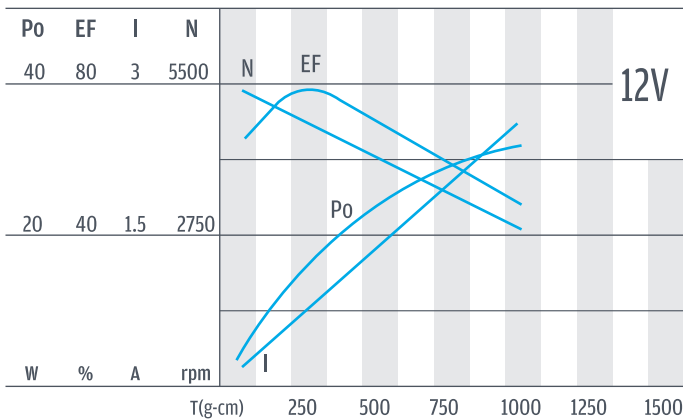


unit:mm

馬達單體型式/ Motor Data

定格電壓 Rated voltage(V)	無負荷轉速 No load speed(rpm)	無負荷電流 No load current(mA)	定格轉速 Rated speed(rpm)	定格扭力 Rated torque(g.cm)	定格電流 Rated current(A)	最大效率 Max. efficiency(%)	重量 Weight(g)
12	5000	300	4000	250	1.6	63	250
24	5200	250	4200	370	1.1	60	250

馬達單體特性/ Motor Characteristics



- 使用相對溼度：20%~85%RH
Operating relative humidity
- 使用溫度範圍：-10°C~+60°C
Operating temperature range