

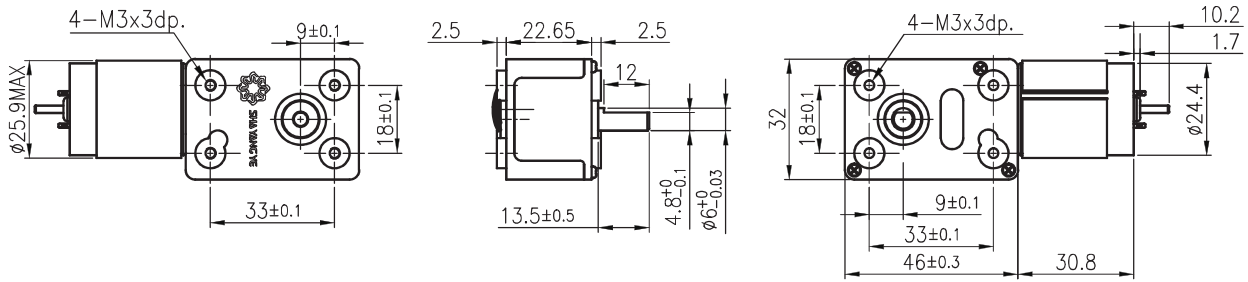
WG-32GM

01 & 02 TYPE



外形尺寸 / Appearance Size

可選擇單出軸或者雙出軸 / Single or dual output shaft are both available



unit:mm

齒輪箱馬達轉矩 & 速度 / Gear Motor Torque & Speed

		減速比 Reduction ratio	1/75	1/100	1/200	1/300	1/500	1/700	1/900	1/1012	
12V	定格扭力 Rated torque (kgf-cm)	1.4	1.9	3.8	5.5	6	6	6	6		
	定格轉速 Rated speed (rpm)	55.5	42	20.5	14	8.8	6.5	5.1	4.6		
24V	定格扭力 Rated torque (kgf-cm)	1.4	1.9	3.8	5.5	6	6	6	6		
	定格轉速 Rated speed (rpm)	55.5	42	20.5	14	8.8	6.5	5.1	4.6		
軸心迴轉方向 Rotation direction			CW			CCW					

馬達單體型式 / Motor Data

定格電壓 Rated volt (V)	定格扭力 Rated torque (gf-cm)	定格轉速 Rated speed (rpm)	定格電流 Rated current (mA)	無負荷轉速 No load speed (rpm)	無負荷電流 No load current (mA)	定格出力 Rated output (W)	重量 Weight (g)
12	55.3	4160	≤ 240	4900	≤ 60	2.37	60
24	55.3	4160	≤ 140	4900	≤ 30	2.37	60

馬達單體特性 / Motor Characteristics

