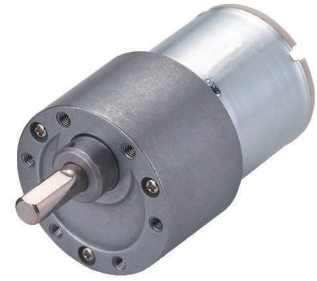
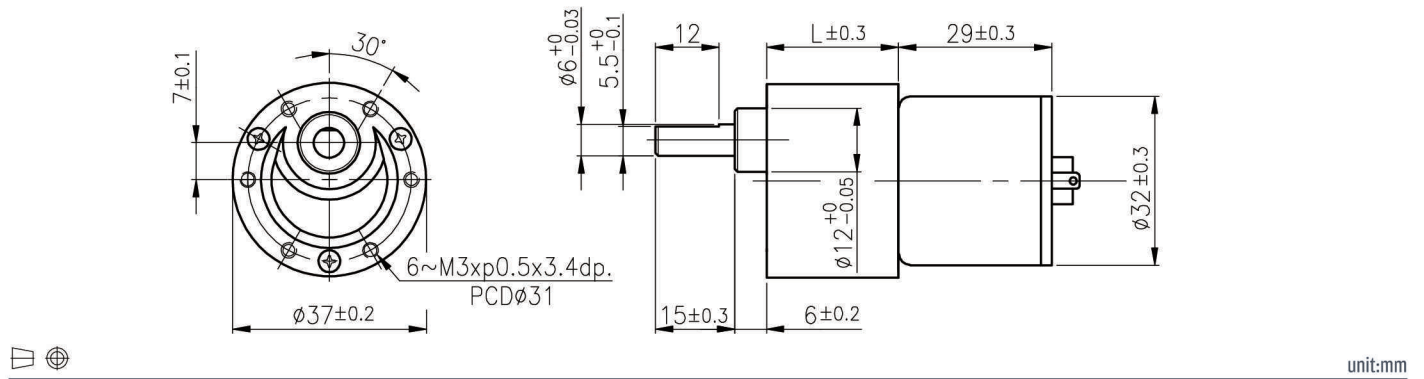


RB-37PGM

11 & 12 TYPE



外形尺寸/ Appearance Size



齒輪箱馬達轉矩 & 速度/ Gear Motor Torque & Speed

	減速比 Reduction ratio	1/18	1/30	1/50	1/60	1/75	1/90	1/100	1/120	1/150	1/180	1/200	1/250	1/300	1/500	1/600	1/750	1/1000	1/1500	1/3000
12V	定格扭力 Rated torque (kgf-cm)	0.8	1.2	2	2	2.9	3	3	4	4	4	4	4	4	4	4	4	4	4	4
	定格轉速 Rated speed (rpm)	270	172	100	85	67	57.5	52	43	36	31	29	23	20.5	12	10	8	6.2	4.1	2.1
24V	定格扭力 Rated torque (kgf-cm)	0.8	1.2	2	2	3	3	3	4	4	4	4	4	4	4	4	4	4	4	4
	定格轉速 Rated speed (rpm)	278	170	98	84	65	57	51	42	35	31	29	23	20	12	10	8	6.2	4.1	2.1
	軸心迴轉方向 Rotation direction	CCW			CW			CCW			CW			CCW						
	長度 Length (L)	22			24.5			27			29.5			32						

馬達單體型式/ Motor Data

定格電壓 Rated volt (V)	定格扭力 Rated torque (gf-cm)	定格轉速 Rated speed (rpm)	定格電流 Rated current (A)	無負荷轉速 No load speed (rpm)	無負荷電流 No load current (A)	定格出力 Rated output (W)	重量 Weight (g)
12	60	5100	≤0.47	6200	≤0.12	3.14	75
24	62	5000	≤0.21	6200	≤0.06	3.17	75

馬達單體特性/ Motor Characteristics

