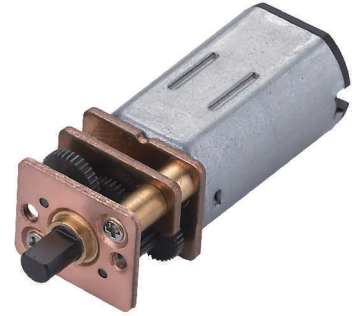
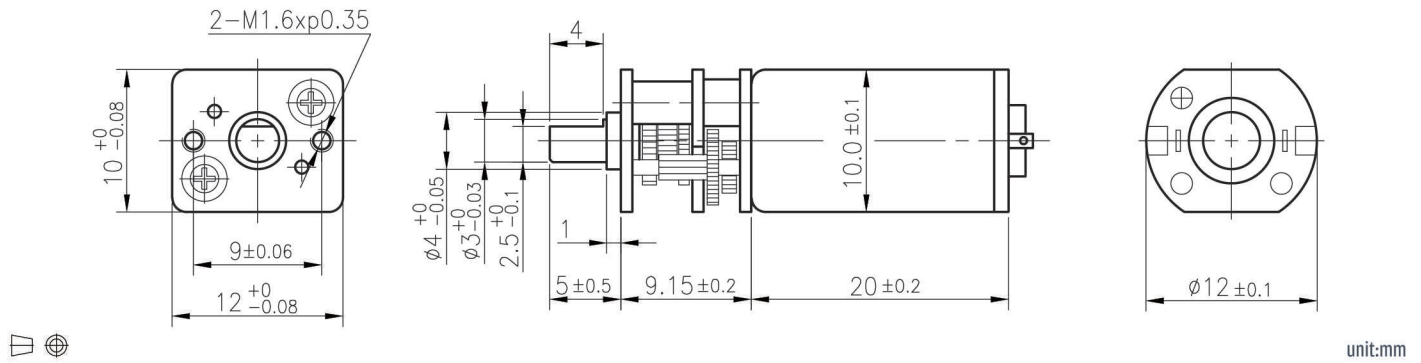


RA-12WGM

03 & 04 TYPE



外形尺寸/ Appearance Size



齒輪箱馬達轉矩 & 速度/ Gear Motor Torque & Speed

		1/10	1/19	1/29	1/60	1/76	1/102	1/134	1/197	1/235	1/298
3V	減速比 Reduction ratio										
	定格扭力 Rated torque (gf-cm)	24	40	60	115	150	200	235	345	415	525
6V	定格轉速 Rated speed (rpm)	1300	700	460	225	175	132	100	68	57	45
	定格扭力 Rated torque (gf-cm)	30	55	80	155	200	270	300	460	530	700
定格轉速 Rated speed (rpm)		1500	780	510	250	195	145	112	76	64	50
軸心迴轉方向 Rotation direction		CW	CCW			CW			CCW		

馬達單體型式/ Motor Data

定格電壓 Rated volt (V)	定格扭力 Rated torque (gf-cm)	定格轉速 Rated speed (rpm)	定格電流 Rated current (A)	無負荷轉速 No load speed (rpm)	無負荷電流 No load current (A)	定格出力 Rated output (W)	重量 Weight (g)
3	3	13500	≤0.31	16000	≤0.09	0.41	7.5
6	4	15000	≤0.25	18000	≤0.065	0.61	7.5

馬達單體特性/ Motor Characteristics

