



SHA YANG YE  
Drive Motion Drive Passion



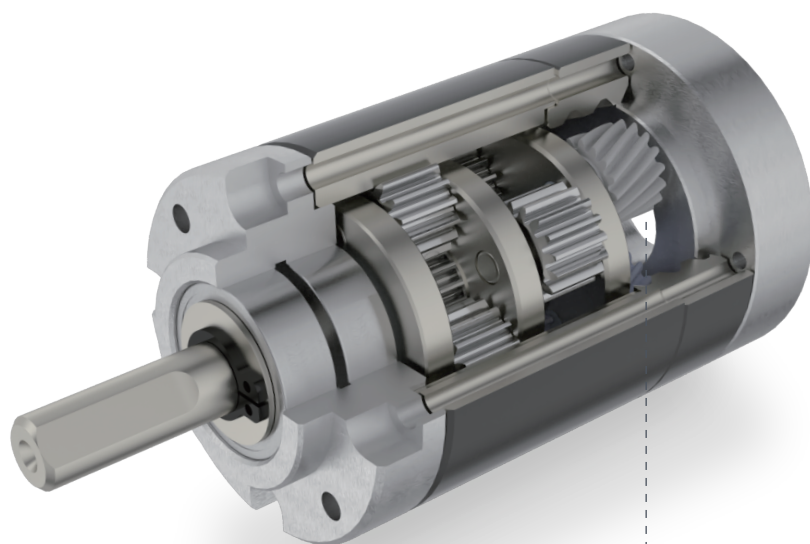
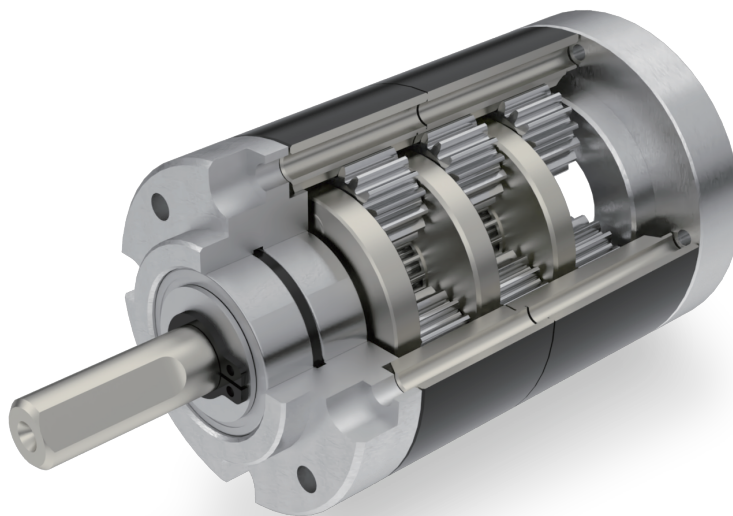
# Precision Planetary Gearbox & Gear Motor

PG series

## 精密型行星式齒輪箱 Precision Planetary Gearbox

### 標準精密型行星式齒輪箱 Standard Precision Planetary Gearbox

- 可承受扭力大  
High Torque
- 效率高  
High Efficiency
- 背隙小  
Low Backlash



### 低噪音精密型行星式齒輪箱 Low Noise Precision Planetary Gearbox

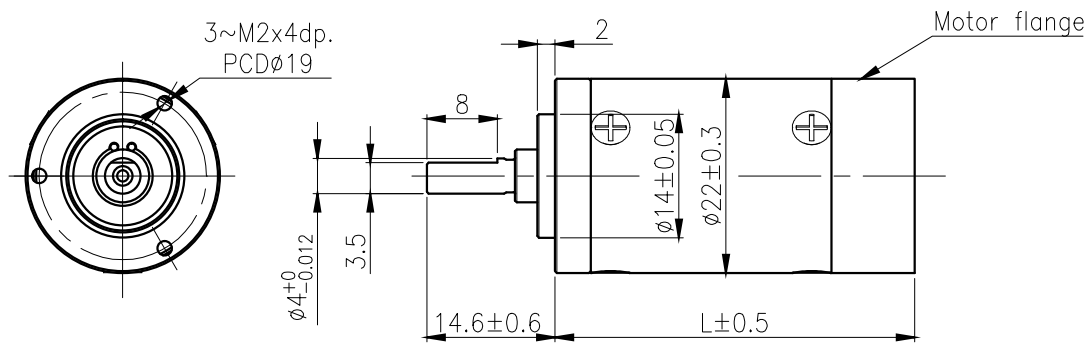
- 低噪音  
Low Noise
- 可承受扭力大  
High Torque
- 效率高  
High Efficiency
- 背隙小  
Low Backlash

○ 塑膠斜齒輪可降低噪音  
Plastic helical gear for low noise

# PG-22



## 外形尺寸 / Appearance Size



unit:mm

## 產品規格 / Product Specifications

版本 Version	級數 Number of stages	外殼材質 Housing material	輸出軸承型式 Bearing at output	徑向負荷 Radial load (10mm from flange)	軸向負載 Shaft axial load	主軸最大承受壓力 Shaft press fit force, max.	徑向間隙 Radial play of shaft	軸向間隙 Thrust play of shaft	背隙(無負荷時) Backlash, at no-load
PG-22 標準版/Standard	1	金屬 Metal	滾珠軸承 Ball bearings	≤ 2.5 kgf	≤ 1 kgf	≤ 5 kgf	≤ 0.05 mm	≤ 0.2 mm	≤ 1.5 °
	2	金屬 Metal	滾珠軸承 Ball bearings	≤ 3.5 kgf	≤ 1.5 kgf	≤ 5 kgf	≤ 0.05 mm	≤ 0.2 mm	≤ 2.0 °
	3	金屬 Metal	滾珠軸承 Ball bearings	≤ 5 kgf	≤ 1.5 kgf	≤ 5 kgf	≤ 0.05 mm	≤ 0.2 mm	≤ 2.5 °

## 標準減速比型式 / Gearboxes Specifications

級數 Number of stages	1	2	3
減速比 Reduction ratio	1/4(3.71), 1/4(4.29), 1/5, 1/7	1/14, 1/16, 1/18, 1/19, 1/22, 1/25, 1/27, 1/29, 1/35, 1/46	1/51, 1/59, 1/68, 1/71, 1/79, 1/93, 1/95, 1/100, 1/107, 1/115, 1/124, 1/130, 1/139, 1/150, 1/169, 1/181, 1/195, 1/236, 1/308
定格容許扭力(kgf-cm Max.) Rated tolerance torque	5.4	6.3	7.2
瞬間容許扭力(kgf-cm) Max Momentary tolerance torque	8.1	9.4	10.8
效率(%) Efficiency	90	80	70
長度(mm) * 1 Length(L)	23.2	31.4	39.5
重量 * 2 Weight(g)	43	58	75

• 使用相對溼度:20%-85%RH    • 使用溫度範圍: -30°C~+100°C  
Operating relative humidity    Operating temperature range

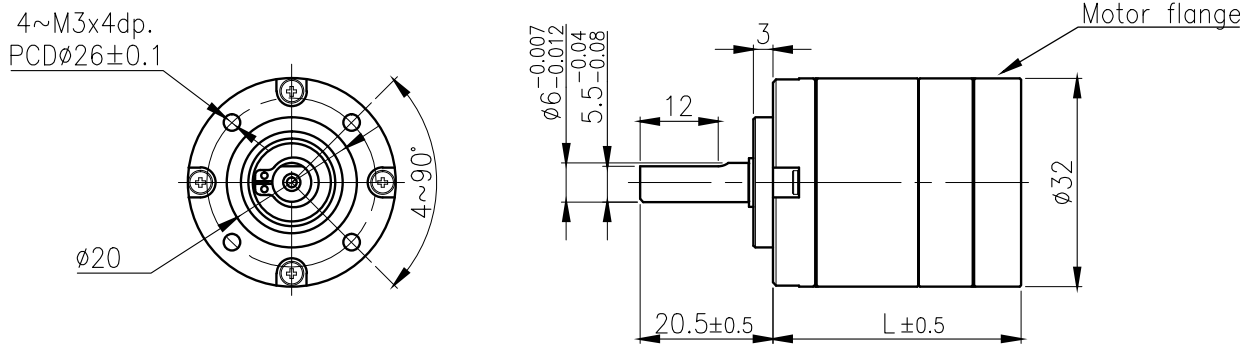
\* 1 參考值 · 我們會依選用的馬達而進行下蓋尺寸的優化設計  
Reference. The flange size will be optimized according to the selected motor.

\* 2 參考值 · 重量會因部分零件的材質與尺寸不同而有所差異  
Reference. The weight will vary due to the material and size of some parts.

# PG-32



## 外形尺寸 / Appearance Size



unit:mm

## 產品規格 / Product Specifications

版本 Version	級數 Number of stages	外殼材質 Housing material	輸出軸承型式 Bearing at output	徑向負荷 Radial load (10mm from flange)	軸向負載 Shaft axial load	主軸最大承受壓力 Shaft press fit force, max.	徑向間隙 Radial play of shaft	軸向間隙 Thrust play of shaft	背隙(無負荷時) Backlash, at no-load
PG-32 標準版/Standard	1	金屬 Metal	滾珠軸承 Ball bearings	≤ 4 kgf	≤ 1 kgf	≤ 10 kgf	≤0.05 mm	≤0.3 mm	≤1.45 °
	2	金屬 Metal	滾珠軸承 Ball bearings	≤ 7 kgf	≤ 2 kgf	≤ 10 kgf	≤0.05 mm	≤0.3 mm	≤1.50 °
	3	金屬 Metal	滾珠軸承 Ball bearings	≤10 kgf	≤ 3 kgf	≤ 10 kgf	≤0.05 mm	≤0.3 mm	≤1.55 °

## 標準減速比型式 / Gearboxes Specifications

級數 Number of stages	1	2	3
減速比 Reduction ratio	1/4(3.71), 1/4(4.29), 1/5, 1/7	1/14, 1/16, 1/18, 1/19, 1/22, 1/25, 1/27, 1/29, 1/35, 1/46	1/51, 1/59, 1/68, 1/71, 1/79, 1/93, 1/95, 1/100, 1/107, 1/115, 1/124, 1/130, 1/139, 1/150, 1/169, 1/181, 1/195, 1/236, 1/308
定格容許扭力(kgf-cm Max.) Rated tolerance torque	6.75	20	40
瞬間容許扭力(kgf-cm) Max Momentary tolerance torque	10	30	60
效率(%) Efficiency	80	75	70
長度(mm) * 1 Length(L)	26	35.8	45.5
重量 * 2 Weight(g)	150	200	250

• 使用相對溼度:20%-85%RH      • 使用溫度範圍: -30°C~+100°C  
Operating relative humidity      Operating temperature range

\* 1 參考值 · 我們會依選用的馬達而進行下蓋尺寸的優化設計  
Reference. The flange size will be optimized according to the selected motor.

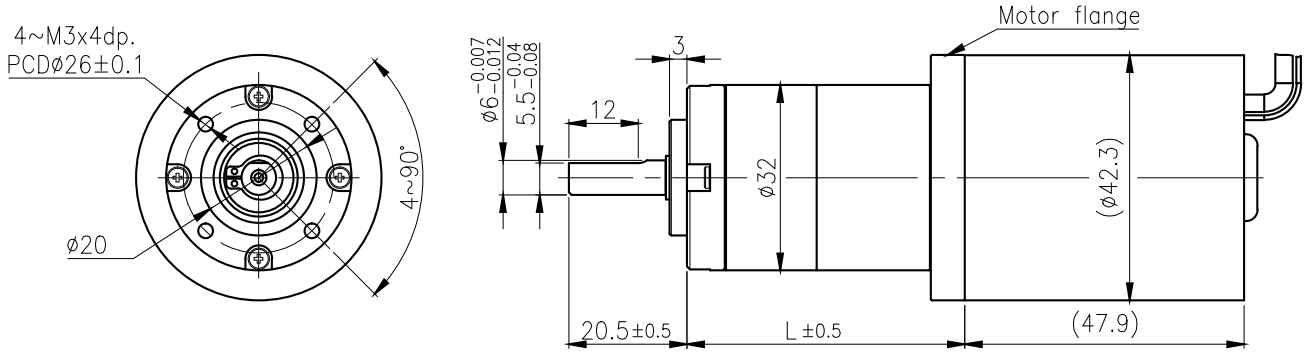
\* 2 參考值 · 重量會因部分零件的材質與尺寸不同而有所差異  
Reference. The weight will vary due to the material and size of some parts.



# PG-32GM



## 外形尺寸 / Appearance Size



unit:mm

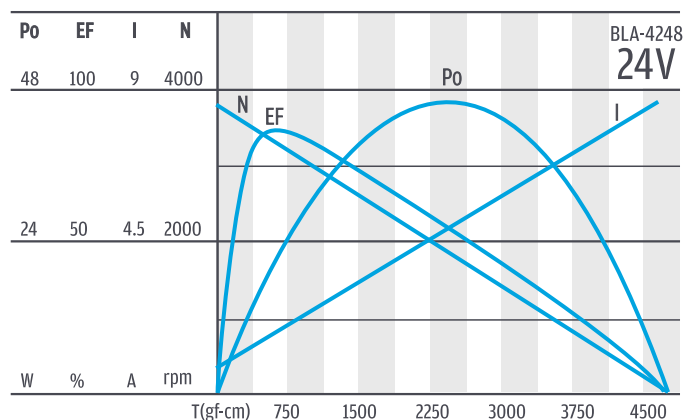
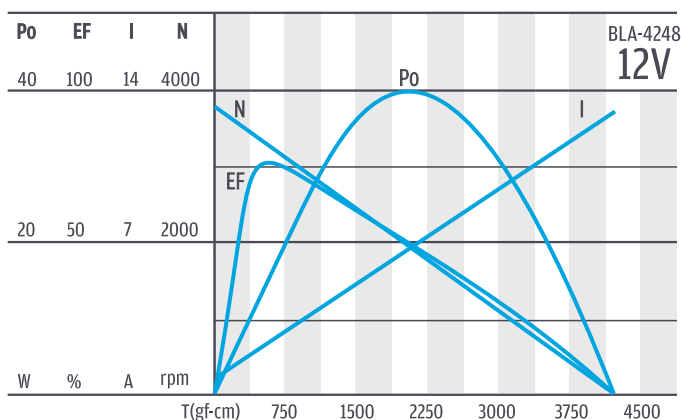
## 齒輪箱馬達轉矩 & 速度 / Gear Motor Torque & Speed

輸出扭力&轉矩 Output torque and speed	減速比	定格扭力	定格轉速	減速比	定格扭力	定格轉速	減速比	定格扭力	定格轉速
	Reduction ratio	Rated torque(kgf-cm)	Rated speed(rpm)	Reduction ratio	Rated torque(kgf-cm)	Rated speed(rpm)	Reduction ratio	Rated torque(kgf-cm)	Rated speed(rpm)
	1/4 (3.71)	2.1	809	1/14 (13.73)	7.2	218	1/51 (50.90)	24.9	58.9
	1/4 (4.29)	2.4	700	1/16 (15.88)	8.3	189	1/59 (58.87)	28.8	51.0
	1/5 (5.18)	2.9	579	1/18 (18.37)	9.6	163	1/68 (68.08)	33.4	44.1
	1/7 (6.75)	3.8	444	1/19 (19.20)	10.1	156	1/71 (71.17)	34.9	42.2
				1/22 (22.21)	11.7	135	1/79 (78.73)	38.6	38.1
				1/25 (25.02)	13.1	120	1/93 (92.71)	40.0	33.5
				1/27 (26.85)	14.1	112	1/95 (95.19)	40.0	32.9
				1/29 (28.93)	15.2	104	1/107 (107.22)	40.0	29.9
				1/35 (34.98)	18.4	86	1/115 (115.09)	40.0	28.2
				1/46 (45.56)	20.0	69	1/130 (129.63)	40.0	25.6
							1/139 (139.15)	40.0	24.1
							1/150 (149.92)	40.0	22.6
							1/169 (168.85)	40.0	20.4
							1/181 (181.26)	40.0	19.1
							1/195 (195.28)	40.0	17.9
							1/236 (236.10)	40.0	15.1
							1/308 (307.55)	40.0	11.8
長度 (mm) Length(L), max		38			48			58	
齒輪箱馬達重量 Weight(g), approx.		420			460			515	

## 馬達單體型式 / Motor Data

定格電壓 Rated volt (V)	定格扭力 Rated torque (kgf-cm)	定格轉速 Rated speed (rpm)	定格電流 Rated current (mA)	無負荷轉速 No load speed (rpm)	無負荷電流 No load current (mA)	定格出力 Rated output (W)
12	0.7	3000	≤ 2900	3800	≤ 500	22
24	0.7	3000	≤ 1500	3800	≤ 300	22

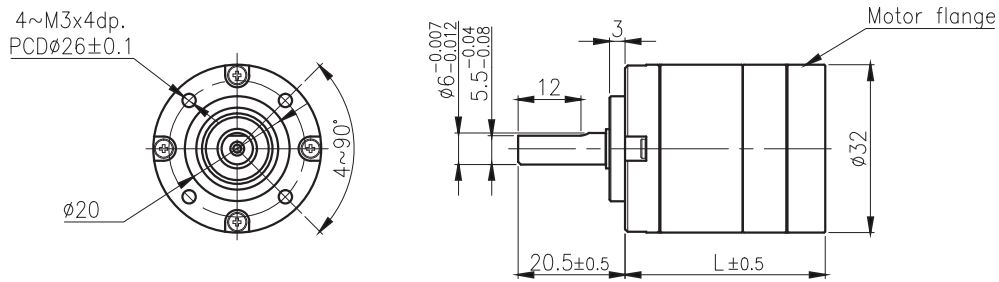
## 馬達單體特性 / Motor Characteristics



# PG-32LN



## 外形尺寸 / Appearance Size



unit:mm

## 產品規格 / Product Specifications

版本 Version	級數 Number of stages	外殼材質 Housing material	輸出軸承型式 Bearing at output	徑向負荷 Radial load (10mm from flange)	軸向負載 Shaft axial load	主軸最大承受壓入力 Shaft press fit force, max.	徑向間隙 Radial play of shaft	軸向間隙 Thrust play of shaft	背隙(無負荷時) Backlash, at no-load
PG-32LN	2	金屬 Metal	滾珠軸承 Ball bearings	≤ 7 kgf	≤ 2 kgf	≤ 10 kgf	≤ 0.05 mm	≤ 0.3 mm	≤ 1.50 °
低噪版/Noise Reduced	3	金屬 Metal	滾珠軸承 Ball bearings	≤ 10 kgf	≤ 3 kgf	≤ 10 kgf	≤ 0.05 mm	≤ 0.3 mm	≤ 1.55 °

## 標準減速比型式 / Gearboxes Specifications

級數 Number of stages	2	3
減速比 Reduction ratio	1/14, 1/16, 1/18, 1/19, 1/22, 1/25, 1/27, 1/29 1/35, 1/46	1/51, 1/59, 1/68, 1/71, 1/79, 1/93, 1/95, 1/100, 1/107, 1/115, 1/124, 1/130, 1/139, 1/150, 1/169, 1/181, 1/195, 1/236, 1/308
定格容許扭力(kgf-cm Max.) Rated tolerance torque	20	40
瞬間容許扭力(kgf-cm) Max Momentary tolerance torque	30	60
效率(%) Efficiency	75	70
長度(mm) * 1 Length(L)	35.8	45.5
重量 * 2 Weight(g)	200	250

• 使用相對溼度:20%-85%RH      • 使用溫度範圍: -30°C~+100°C  
Operating relative humidity      Operating temprature range

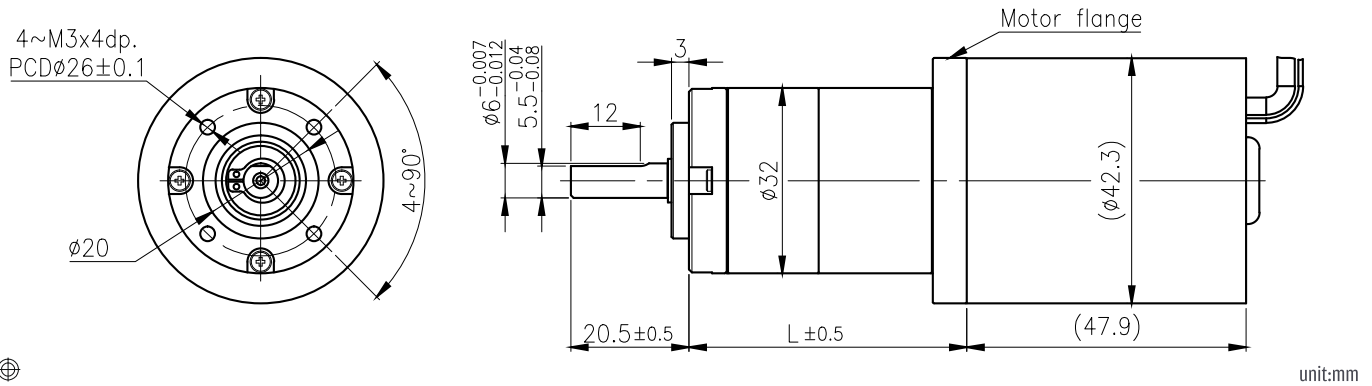
\* 1 參考值 · 我們會依選用的馬達而進行下蓋尺寸的優化設計  
Reference. The flange size will be optimized according to the selected motor.

\* 2 參考值 · 重量會因部分零件的材質與尺寸不同而有所差異  
Reference. The weight will vary due to the material and size of some parts.

# PG-32LNGM



## 外形尺寸 / Appearance Size



unit:mm

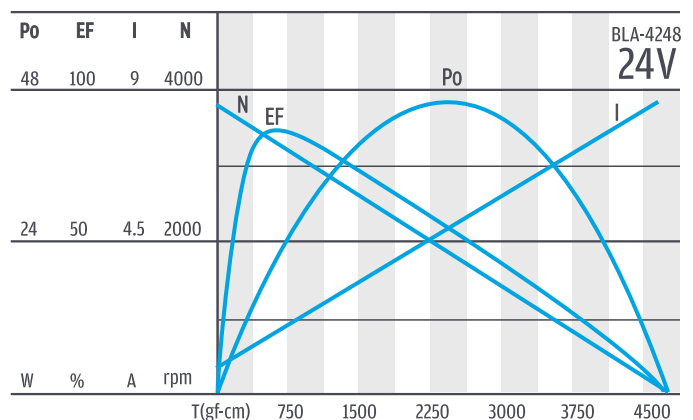
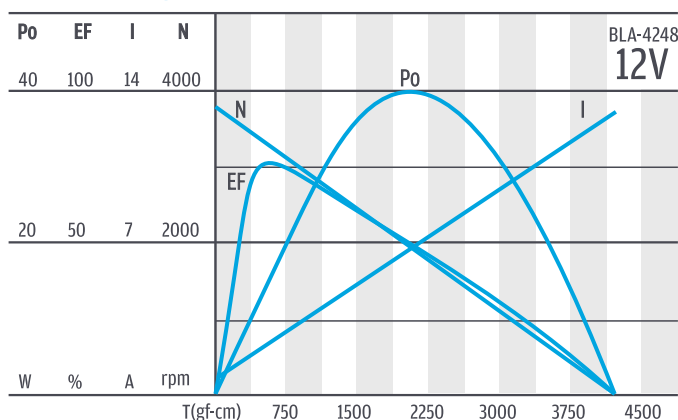
## 齒輪箱馬達轉矩 & 速度 / Gear Motor Torque & Speed

輸出扭力&轉矩 Output torque and speed	減速比	定格扭力	定格轉速	減速比	定格扭力	定格轉速
	Reduction ratio	Rated torque(kgf-cm)	Rated speed(rpm)	Reduction ratio	Rated torque(kgf-cm)	Rated speed(rpm)
	1/14 (13.73)	7.2	218	1/51 (50.90)	24.9	58.9
	1/16 (15.88)	8.3	189	1/59 (58.87)	28.8	51.0
	1/18 (18.37)	9.6	163	1/68 (68.08)	33.4	44.1
	1/19 (19.20)	10.1	156	1/71 (71.17)	34.9	42.2
	1/22 (22.21)	11.7	135	1/79 (78.73)	38.6	38.1
	1/25 (25.02)	13.1	120	1/93 (92.71)	40.0	33.5
	1/27 (26.85)	14.1	112	1/95 (95.19)	40.0	32.9
	1/29 (28.93)	15.2	104	1/107 (107.22)	40.0	29.9
	1/35 (34.98)	18.4	86	1/115 (115.09)	40.0	28.2
	1/46 (45.56)	20.0	69	1/130 (129.63)	40.0	25.6
				1/139 (139.15)	40.0	24.1
				1/150 (149.92)	40.0	22.6
				1/169 (168.85)	40.0	20.4
				1/181 (181.26)	40.0	19.1
				1/195 (195.28)	40.0	17.9
				1/236 (236.10)	40.0	15.1
				1/308 (307.55)	40.0	11.8
長度 (mm) Length(L), max		48			58	
齒輪箱馬達重量 Weight(g), approx.		484			511	

## 馬達單體型式 / Motor Data

定格電壓 Rated volt (V)	定格扭力 Rated torque (kgf-cm)	定格轉速 Rated speed (rpm)	定格電流 Rated current (mA)	無負荷轉速 No load speed (rpm)	無負荷電流 No load current (mA)	定格出力 Rated output (W)
12	0.7	3000	≤ 2900	3800	≤ 500	22
24	0.7	3000	≤ 1500	3800	≤ 300	22

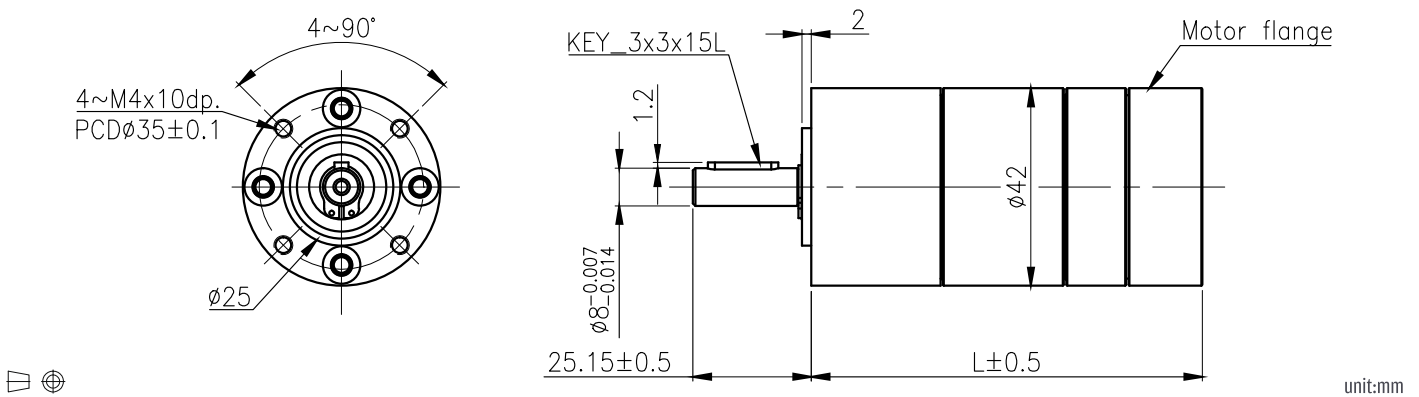
## 馬達單體特性 / Motor Characteristics



# PG-42



## 外形尺寸 / Appearance Size



## 產品規格 / Product Specifications

版本 Version	級數 Number of stages	外殼材質 Housing material	輸出軸承型式 Bearing at output	徑向負荷 Radial load (10mm from flange)	軸向負載 Shaft axial load	主軸最大承受壓力 Shaft press fit force, max.	徑向間隙 Radial play of shaft	軸向間隙 Thrust play of shaft	背隙(無負荷時) Backlash, at no-load
PG-42 標準版/Standard	1	金屬 Metal	滾珠軸承 Ball bearings	≤16 kgf	≤ 5 kgf	≤ 32 kgf	≤0.05 mm	≤0.3 mm	≤0.90 °
	2	金屬 Metal	滾珠軸承 Ball bearings	≤24 kgf	≤ 8 kgf	≤ 32 kgf	≤0.05 mm	≤0.3 mm	≤ 1°
	3	金屬 Metal	滾珠軸承 Ball bearings	≤30 kgf	≤11 kgf	≤ 32 kgf	≤0.05 mm	≤0.3 mm	≤ 1.1°

## 標準減速比型式 / Gearboxes Specifications

級數 Number of stages	1	2	3
減速比 Reduction ratio	1/4(3.71), 1/4(4.29), 1/5, 1/7	1/14, 1/16, 1/18, 1/19, 1/22, 1/25, 1/27, 1/29, 1/35, 1/46	1/51, 1/59, 1/68, 1/71, 1/79, 1/93, 1/95, 1/100, 1/107, 1/115, 1/124, 1/130, 1/139, 1/150, 1/169, 1/181, 1/195, 1/236, 1/308
定格容許扭力(kgf-cm Max.) Rated tolerance torque	27	68	135
瞬間容許扭力(kgf-cm) Max Momentary tolerance torque	41	102	203
效率(%) Efficiency	80	75	70
長度(mm) * 1 Length(L)	49.7	62.7	76
重量 * 2 Weight(g)	280	390	500

• 使用相對溼度:20%-85%RH      • 使用溫度範圍: -30°C~+100°C  
 Operating relative humidity      Operating temperature range

\* 1 參考值 · 我們會依選用的馬達而進行下蓋尺寸的優化設計  
 Reference. The flange size will be optimized according to the selected motor.

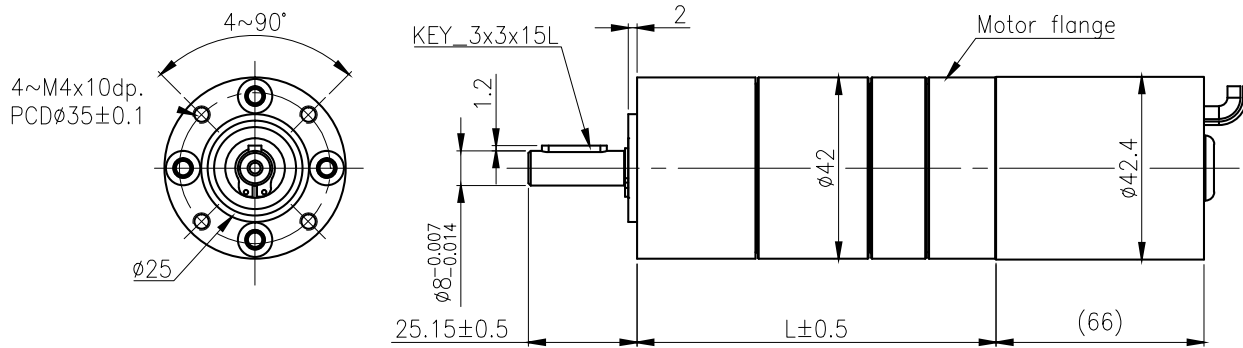
\* 2 參考值 · 重量會因部分零件的材質與尺寸不同而有所差異  
 Reference. The weight will vary due to the material and size of some parts.



# PG-42GM



## 外形尺寸 / Appearance Size



unit:mm

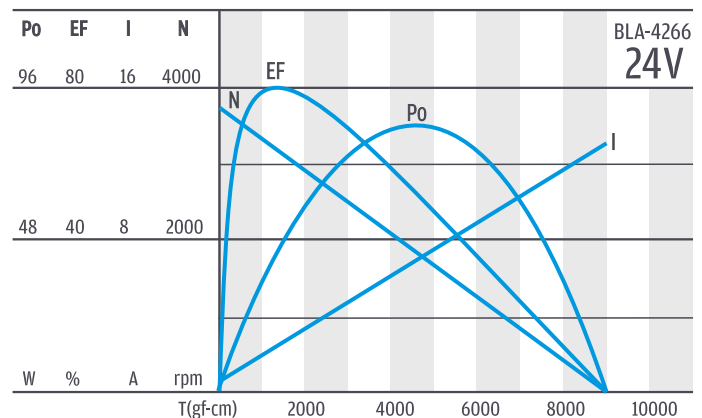
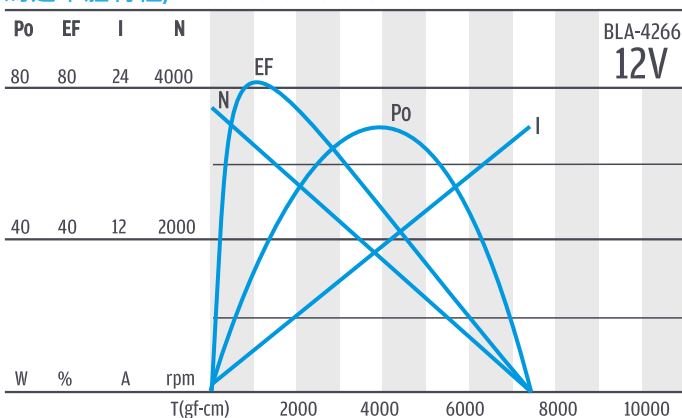
## 齒輪箱馬達轉矩 & 速度 / Gear Motor Torque & Speed

輸出扭力&轉矩 Output torque and speed	減速比	定格扭力	定格轉速	減速比	定格扭力	定格轉速	減速比	定格扭力	定格轉速
	Reduction ratio	Rated torque(kgf-cm)	Rated speed(rpm)	Reduction ratio	Rated torque(kgf-cm)	Rated speed(rpm)	Reduction ratio	Rated torque(kgf-cm)	Rated speed(rpm)
	1/4 (3.71)	4.2	809	1/14 (13.73)	14.4	218	1/51 (50.90)	49.9	58.9
	1/4 (4.29)	4.8	700	1/16 (15.88)	16.7	189	1/59 (58.87)	57.7	51.0
	1/5 (5.18)	5.8	579	1/18 (18.37)	19.3	163	1/68 (68.08)	66.7	44.1
	1/7 (6.75)	7.6	444	1/19 (19.20)	20.2	156	1/71 (71.17)	69.7	42.2
				1/22 (22.21)	23.3	135	1/79 (78.73)	77.2	38.1
				1/25 (25.02)	26.3	120	1/93 (92.71)	90.9	32.4
				1/27 (26.85)	28.2	112	1/95 (95.19)	93.3	31.5
				1/29 (28.93)	30.4	104	1/107 (107.22)	105.1	28.0
				1/35 (34.98)	36.7	86	1/115 (115.09)	112.8	26.1
				1/46 (45.56)	47.8	66	1/130 (129.63)	127.0	23.1
							1/139 (139.15)	135.0	21.6
							1/150 (149.92)	135.0	20.4
							1/169 (168.85)	135.0	18.6
							1/181 (181.26)	135.0	17.5
							1/195 (195.28)	135.0	16.5
							1/236 (236.10)	135.0	14.0
							1/308 (307.55)	135.0	11.1
長度 (mm) Length(L), max		56.5			70.3			83.8	
齒輪箱馬達重量 Weight(g), approx.		718			830			940	

## 馬達單體型式 / Motor Data

定格電壓 Rated volt (V)	定格扭力 Rated torque (kgf-cm)	定格轉速 Rated speed (rpm)	定格電流 Rated current (A)	無負荷轉速 No load speed (rpm)	無負荷電流 No load current (A)	定格出力 Rated output (W)
12	1.4	3000	≤5	3800	≤0.7	44
24	1.4	3000	≤2.8	3800	≤0.4	44

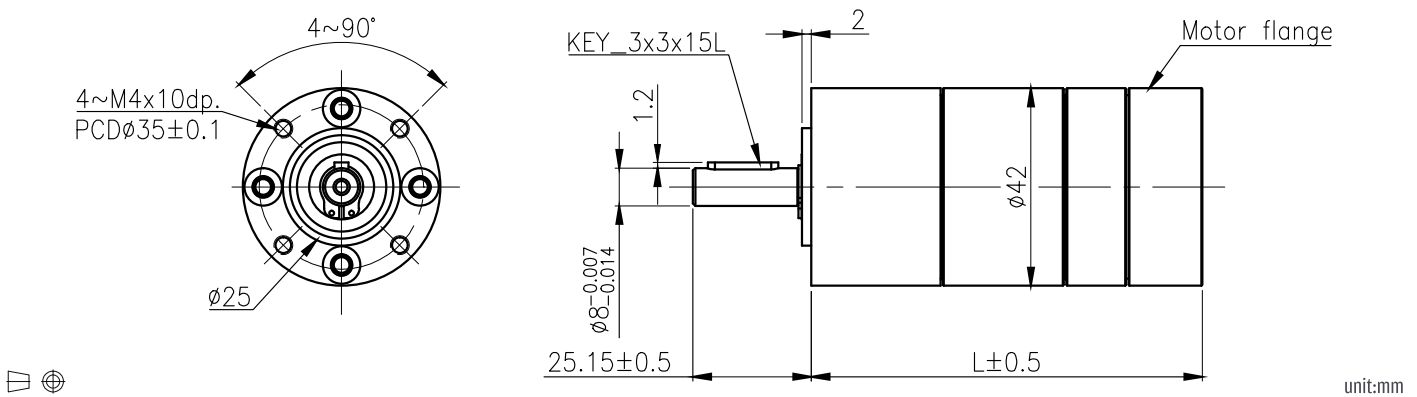
## 馬達單體特性 / Motor Characteristics



# PG-42LN



## 外形尺寸 / Appearance Size



unit:mm

## 產品規格 / Product Specifications

版本 Version	級數 Number of stages	外殼材質 Housing material	輸出軸承型式 Bearing at output	徑向負荷 Radial load (10mm from flange)	軸向負載 Shaft axial load	主軸最大承受壓力 Shaft press fit force, max.	徑向間隙 Radial play of shaft	軸向間隙 Thrust play of shaft	背隙(無負荷時) Backlash, at no-load
PG-42LN 低噪版/Noise Reduced	1	金屬 Metal	滾珠軸承 Ball bearings	≤16 kgf	≤ 5 kgf	≤ 32 kgf	≤0.05 mm	≤0.3 mm	≤ 1.4 °
	2	金屬 Metal	滾珠軸承 Ball bearings	≤24 kgf	≤ 8 kgf	≤ 32 kgf	≤0.05 mm	≤0.3 mm	≤ 1.4 °
	3	金屬 Metal	滾珠軸承 Ball bearings	≤30 kgf	≤11 kgf	≤ 32 kgf	≤0.05 mm	≤0.3 mm	≤ 1.4 °

## 標準減速比型式 / Gearboxes Specifications

級數 Number of stages	1	2	3
減速比 Reduction ratio	1/4, 1/5(4.59), 1/5(5.36), 1/7, 1/9	1/14, 1/16, 1/17, 1/19, 1/23, 1/25, 1/28(27.76), 1.28(28.05), 1/34, 1/45, 1/58	1/50, 1/58, 1/67, 1/70, 1/81, 1/84, 1/91, 1/98, 1/102, 1/106, 1/115, 1/123, 1/128, 1/137, 1/145, 1/166, 1/176, 1/192, 1/232, 1/302, 1/393
定格容許扭力(kgf-cm Max.) Rated tolerance torque	27	68	135
瞬間容許扭力(kgf-cm) Max Momentary tolerance torque	41	102	203
效率(%) Efficiency	80	75	70
長度(mm) * 1 Length(L)	49.7	62.7	76
重量 * 2 Weight(g)	280	390	500

• 使用相對溼度: 20%-85%RH    • 使用溫度範圍: -30°C~+100°C  
Operating relative humidity    Operating temperature range

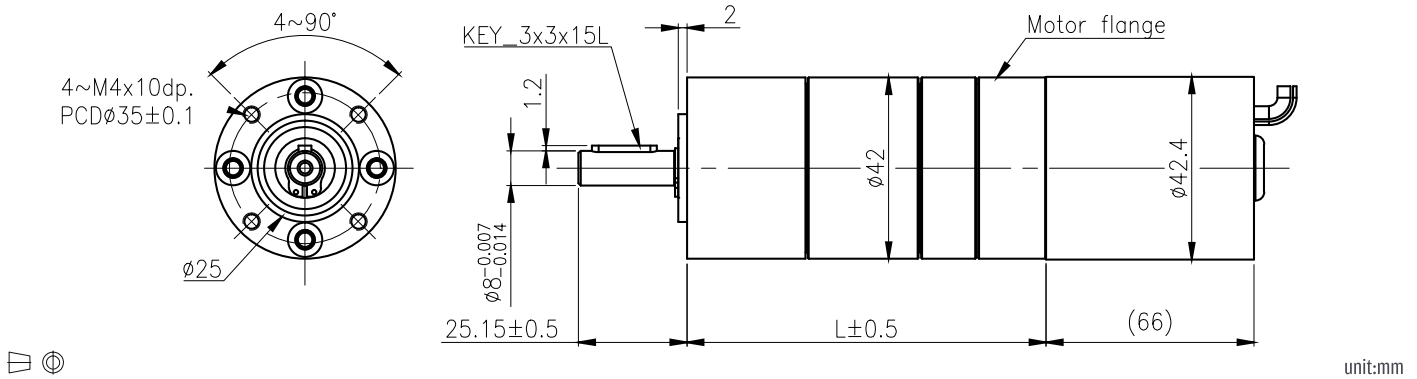
\* 1 參考值 · 我們會依選用的馬達而進行下蓋尺寸的優化設計  
Reference. The flange size will be optimized according to the selected motor.

\* 2 參考值 · 重量會因部分零件的材質與尺寸不同而有所差異  
Reference. The weight will vary due to the material and size of some parts.

# PG-42LNGM



## 外形尺寸 / Appearance Size



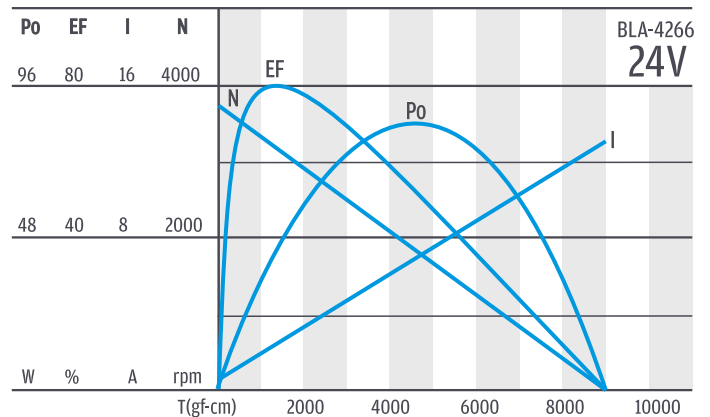
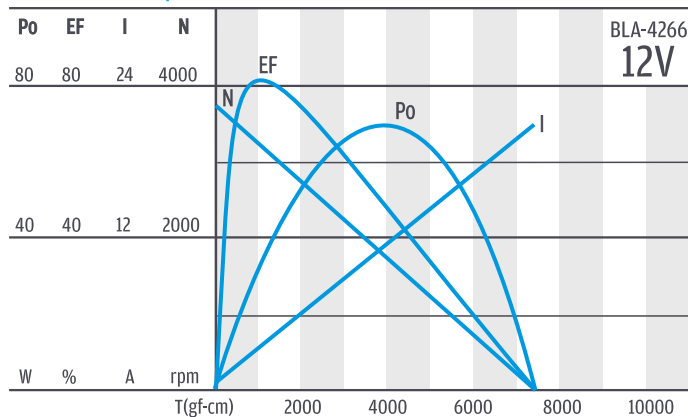
## 齒輪箱馬達轉矩 & 速度 / Gear Motor Torque & Speed

輸出扭力&轉矩 Output torque and speed	減速比	定格扭力	定格轉速	減速比	定格扭力	定格轉速	減速比	定格扭力	定格轉速
	Reduction ratio	Rated torque(kgf-cm)	Rated speed(rpm)	Reduction ratio	Rated torque(kgf-cm)	Rated speed(rpm)	Reduction ratio	Rated torque(kgf-cm)	Rated speed(rpm)
	1/4 (3.65)	4.1	821	1/14 (13.53)	14.2	222	1/50 (50.16)	49.2	59.8
	1/5 (4.59)	4.1	654	1/16 (15.65)	16.4	192	1/58 (58.01)	56.8	51.7
	1/5 (5.36)	6.0	560	1/17 (17.00)	17.9	176	1/67 (67.09)	65.7	44.7
	1/7 (6.55)	7.3	458	1/19 (18.92)	19.9	159	1/70 (70.13)	68.7	42.8
	1/9 (8.63)	9.7	348	1/23 (22.96)	24.1	131	1/81 (81.11)	79.5	37.0
				1/25 (24.65)	25.9	122	1/91 (91.36)	89.5	32.8
				1/28 (27.76)	29.1	108	1/98 (98.07)	96.1	30.6
				1/28 (28.05)	29.5	107	1/106 (105.65)	103.5	28.4
				1/34 (33.92)	35.6	88	1/115 (114.77)	112.5	26.1
				1/45 (44.69)	46.9	67	1/128 (127.74)	125.2	23.5
				1/58 (58.22)	61.1	52	1/137 (137.00)	134.3	21.9
							1/145 (145.36)	135.0	20.9
							1/166 (166.39)	135.0	18.8
							1/176 (175.75)	135.0	18.0
							1/192 (191.56)	135.0	16.8
							1/232(231.61)	135.0	14.3
							1/302 (301.69)	135.0	11.3
長度 (mm) Length(L), max		58			72.1			85.3	
齒輪箱馬達重量 Weight(g), approx.		718			830			940	

## 馬達單體型式 / Motor Data

定格電壓 Rated volt (V)	定格扭力 Rated torque (kgf-cm)	定格轉速 Rated speed (rpm)	定格電流 Rated current (A)	無負荷轉速 No load speed (rpm)	無負荷電流 No load current (A)	定格出力 Rated output (W)
12	1.4	3000	≤ 5	3800	≤ 0.7	44
24	1.4	3000	≤ 2.8	3800	≤ 0.4	44

## 馬達單體特性 / Motor Characteristics







**臺灣總公司**  
Headquarters

臺灣桃園市桃園區桃鶯路461號  
No.461, Taoying Rd., Taoyuan Dist.,  
Taoyuan City, 330048, Taiwan  
T +886-3-3623452  
F +886-3-3628404  
E sales@ShaYangYe.com

**深圳分公司**  
Shenzhen subsidiary

深圳市寶安區新安街道海天路15號  
卓越寶中時代廣場A棟301單元  
A301, Time Square, No.15.Haitian Rd., Xinan Street.,  
Baoan Center Dist., Shenzhen City,518101,China  
T +86-755-27924466  
F +86-755-27584952  
E sales@ShaYangYe.com

**上海分公司**  
Shanghai subsidiary

中國上海市長寧區宣化路28號B402室  
Rm 402, No 28, Xuanhua Rd.,  
Changning Dist.,  
Shanghai City, 200050, China  
T +86-21-61459808  
F +86-21-61459810  
E sales@ShaYangYe.com

**昆山分公司**  
Kunshan subsidiary

中國江蘇省昆山開發區高科技  
工業園北門路1335號  
No 1335, Bei-Men Rd.,  
High-Tech Industrial Park, Kunshan,  
Jiang Su Province, 215316, China  
T +86-512-57772000  
F +86-512-57772005  
E sales@ShaYangYe.com



祥儀官網



微信公眾號

[www.ShaYangYe.com](http://www.ShaYangYe.com)